

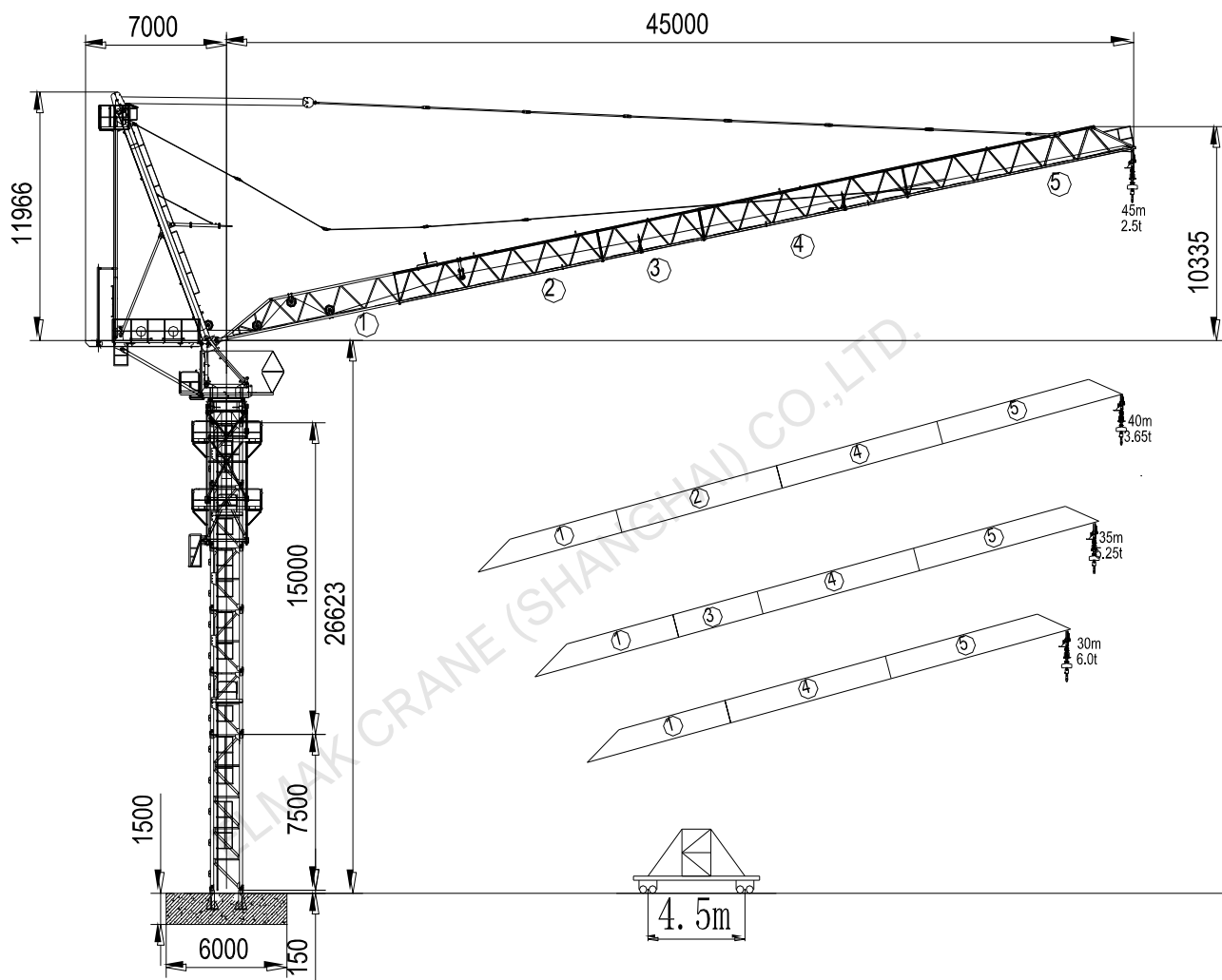
**ELMAK**<sup>®</sup>

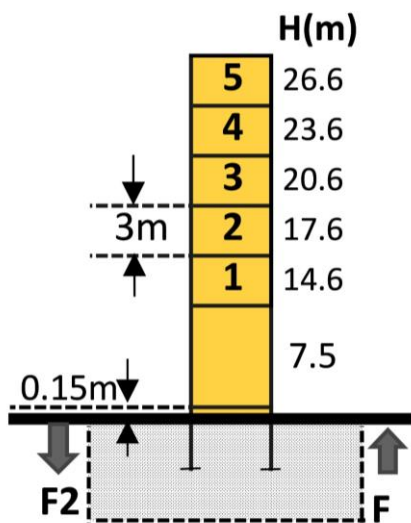
ELMAK CRANE (SHANGHAI) CO.,LTD.


**LUFFING TOWER CRANE**

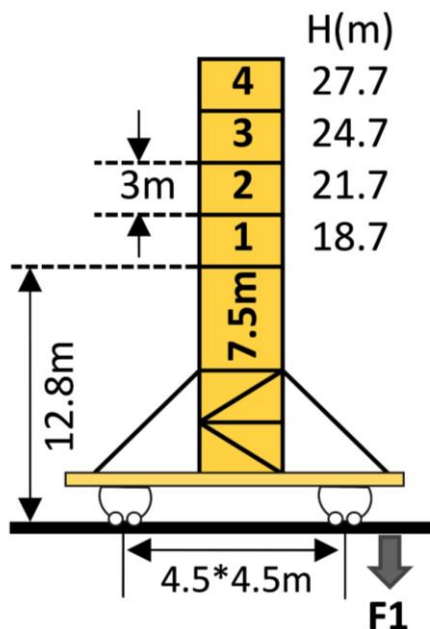
[www.elmaktowercrane.com](http://www.elmaktowercrane.com)


**EML4525-6**

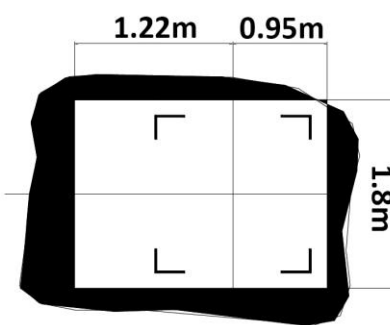
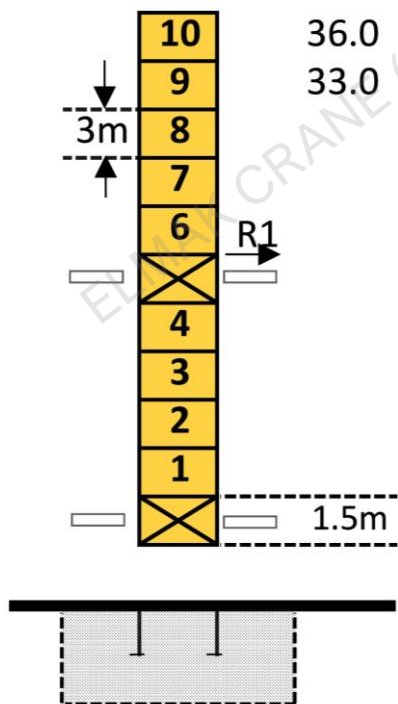



**Mast-Reaction**


	●	■
<b>F2</b>	134.4t	132.6t
<b>F3</b>	110.9t	107.4t
	36.6t	







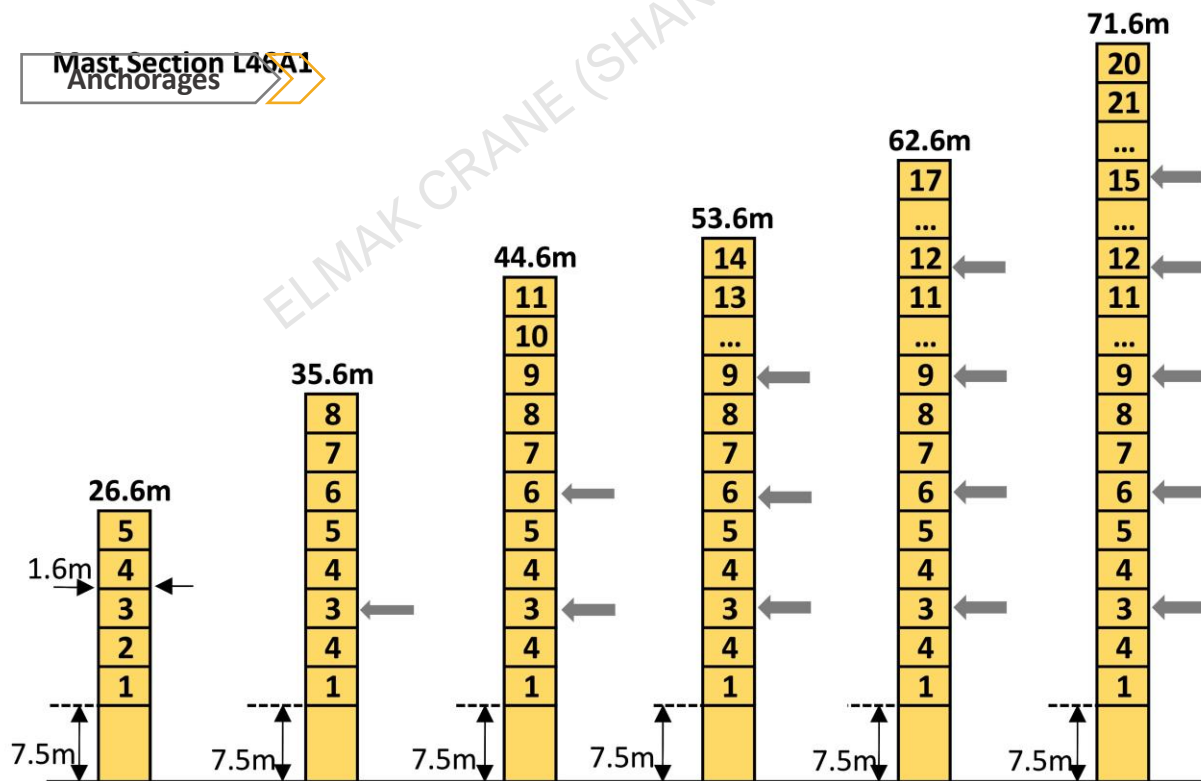
	●	■
<b>F1</b>	62.1t	68.1t
	40.8t	

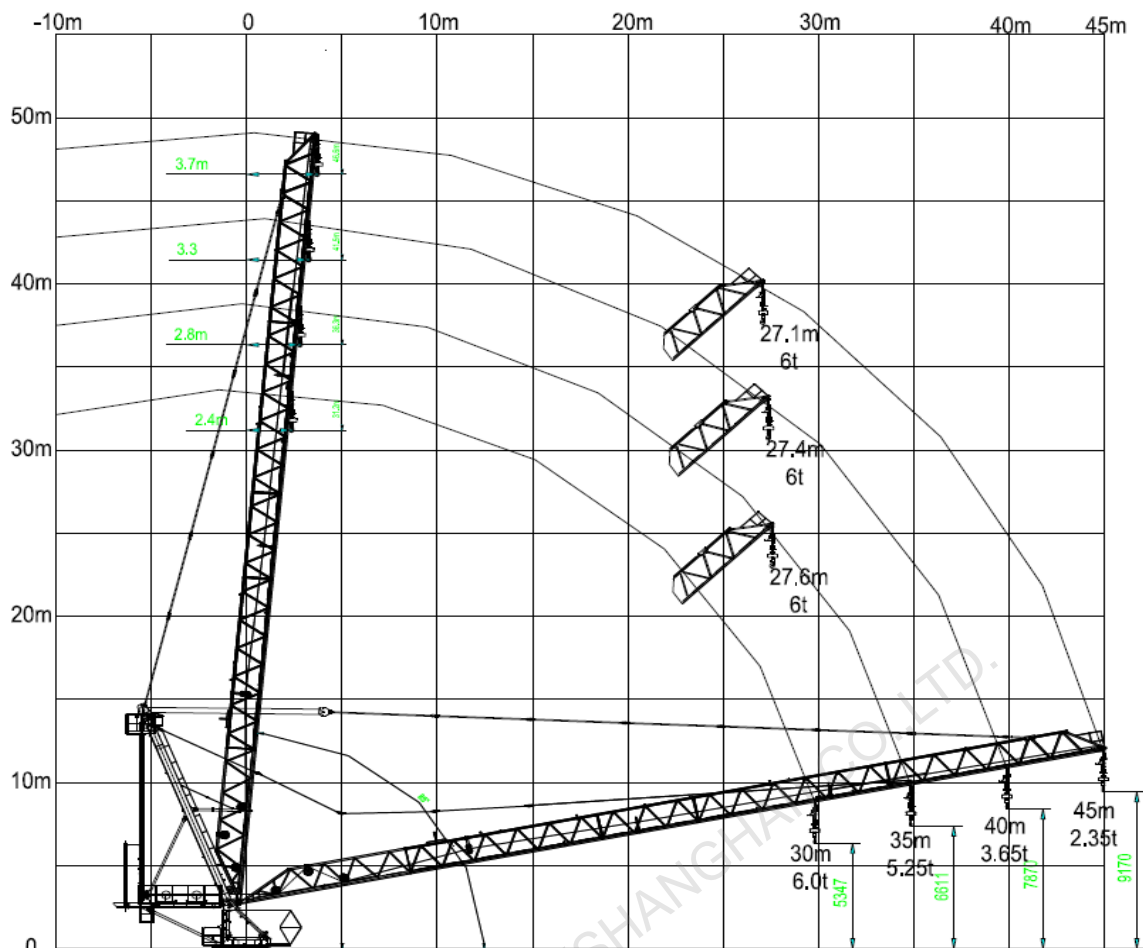


<b>Amin</b>	9.0m
<b>Rmax</b>	70.0t
<b>Pmax</b>	58.0t
	40.0t

**Loading curves**

45m	20.0	25.0	27.1	30.0	35.0	40.0	42.8	45.0	m
	3.00	3.00	3.00	3.00	3.00	3.00	3.00	2.50	t
	6.00	6.00	6.00	4.92	3.45	3.35	2.85	2.35	t
40m	20.0	25.0	27.4	30.0	35.0	38.0	40.0	m	
	3.00	3.00	3.00	3.00	3.00	3.00	3.00	t	
	6.00	6.00	6.00	5.04	4.59	3.90	3.65	t	
35m	20.0	25.0	27.6	30.0	32.0	35.0	m		
	3.00	3.00	3.00	3.00	3.00	3.00	t		
	6.00	6.00	6.00	5.80	5.51	5.25	t		
30m	20.0	25.0	27.5	28.0	30.0	m			
	3.00	3.00	3.00	3.00	3.00	t			
	6.00	6.00	6.00	6.00	6.00	t			

**Mast Section L45A1 Anchorages**


**Luffing jib**

**Mechanisms**

Items	Mechanisms	Speed/Hoist weight				Rope	Motor
		M/min	t	M/min	t	Capacity	KW
Hoisting	30LFV15B	↓ ↑		↓ ↑		500m	30
		0-40	3.0	0-20	6.0		
		0-80	1.5	0-40	3.0		
Luffing	24DVF25B1	0~42m/min					24
Slewing	JH08	0~0.7rpm					2*95N.M
Travelling	RT443	15~30m/min					2*5.2
Main electrical components: Schneider (Frequency converter, Contactor, Relay)							