

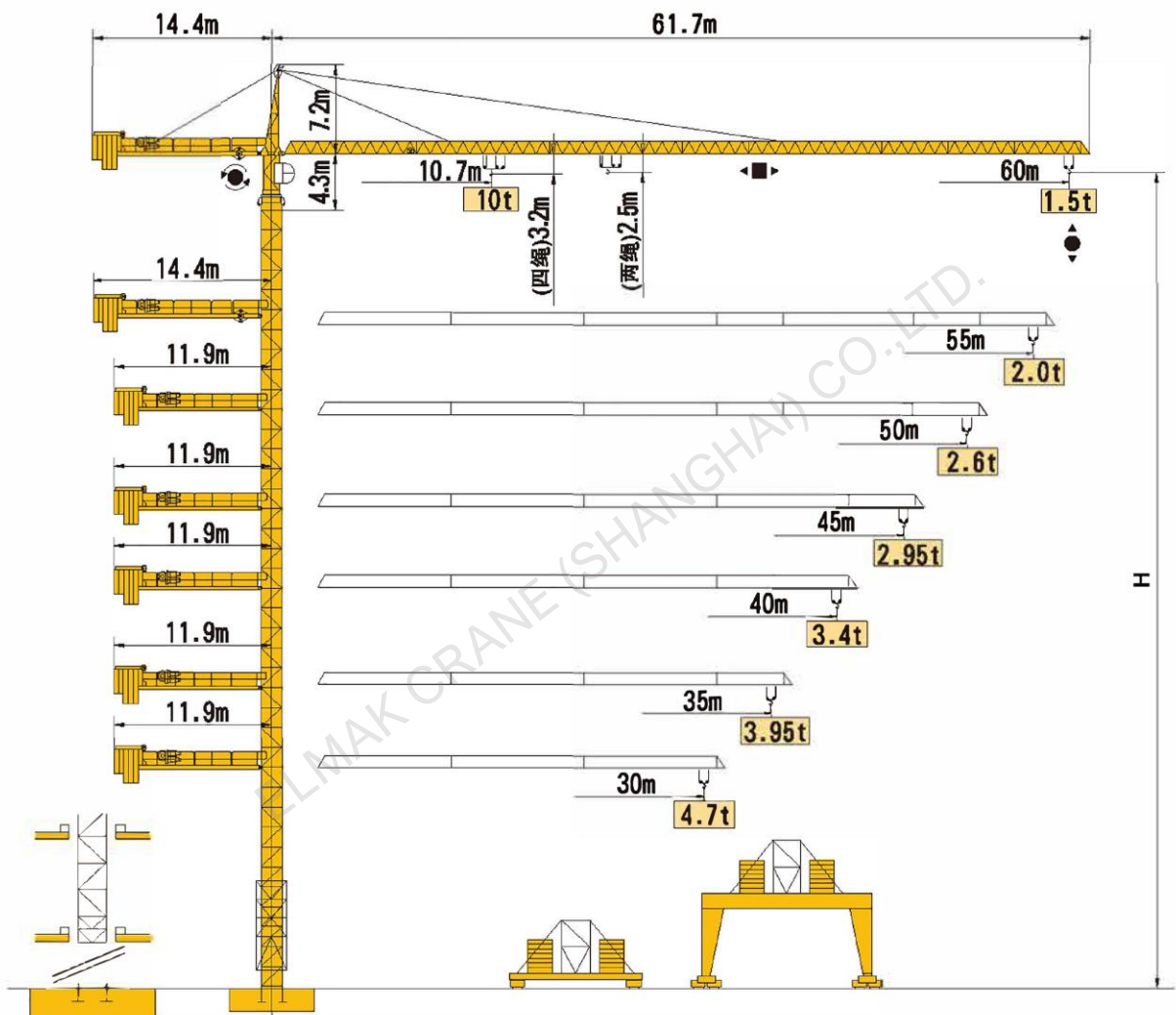
ELMAK[®]

ELMAK CRANE (SHANGHAI) CO.,LTD.

TOPKIT TOWER CRANE

www.elmaktowercrane.com

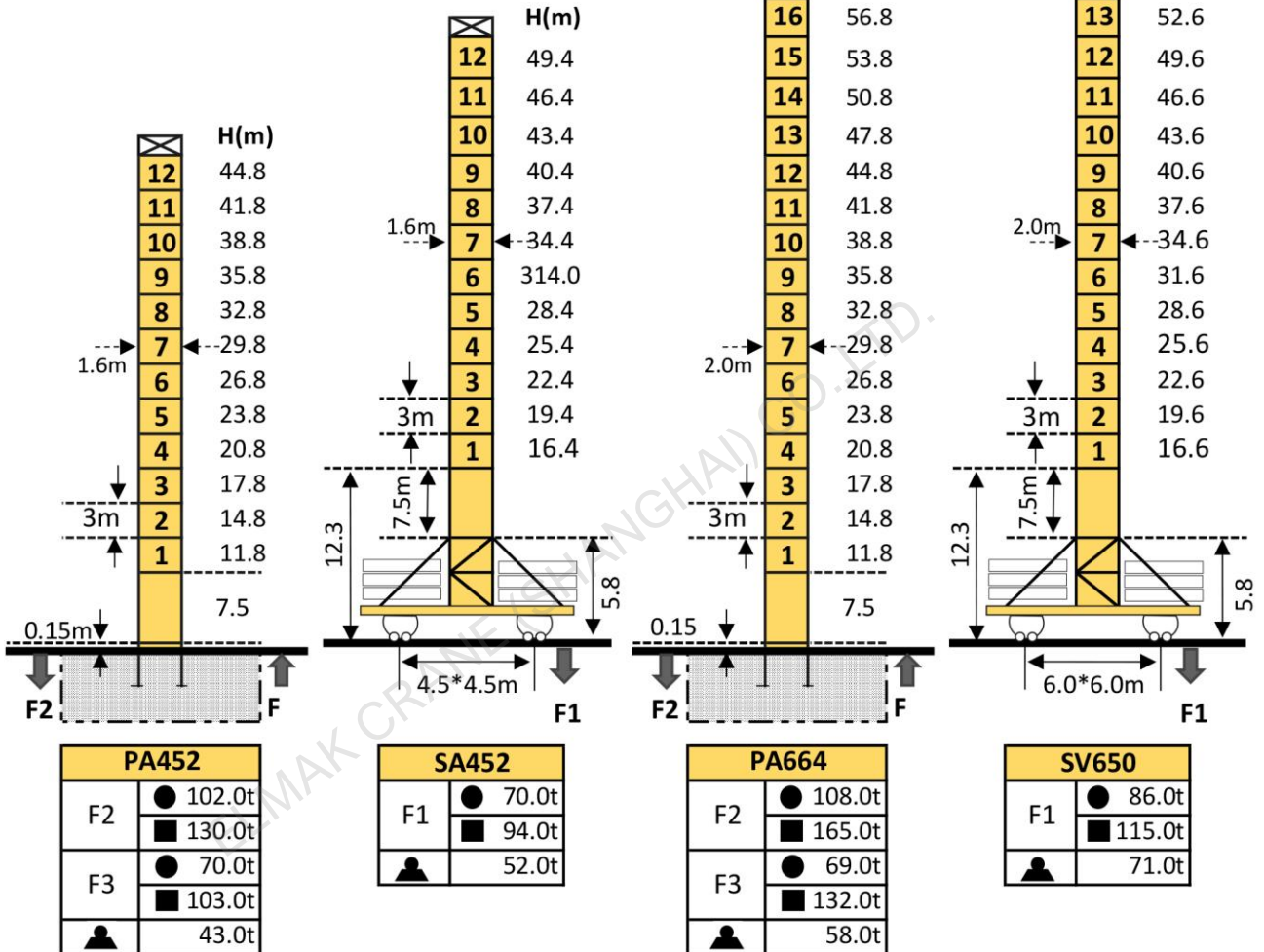
EMK6015-10



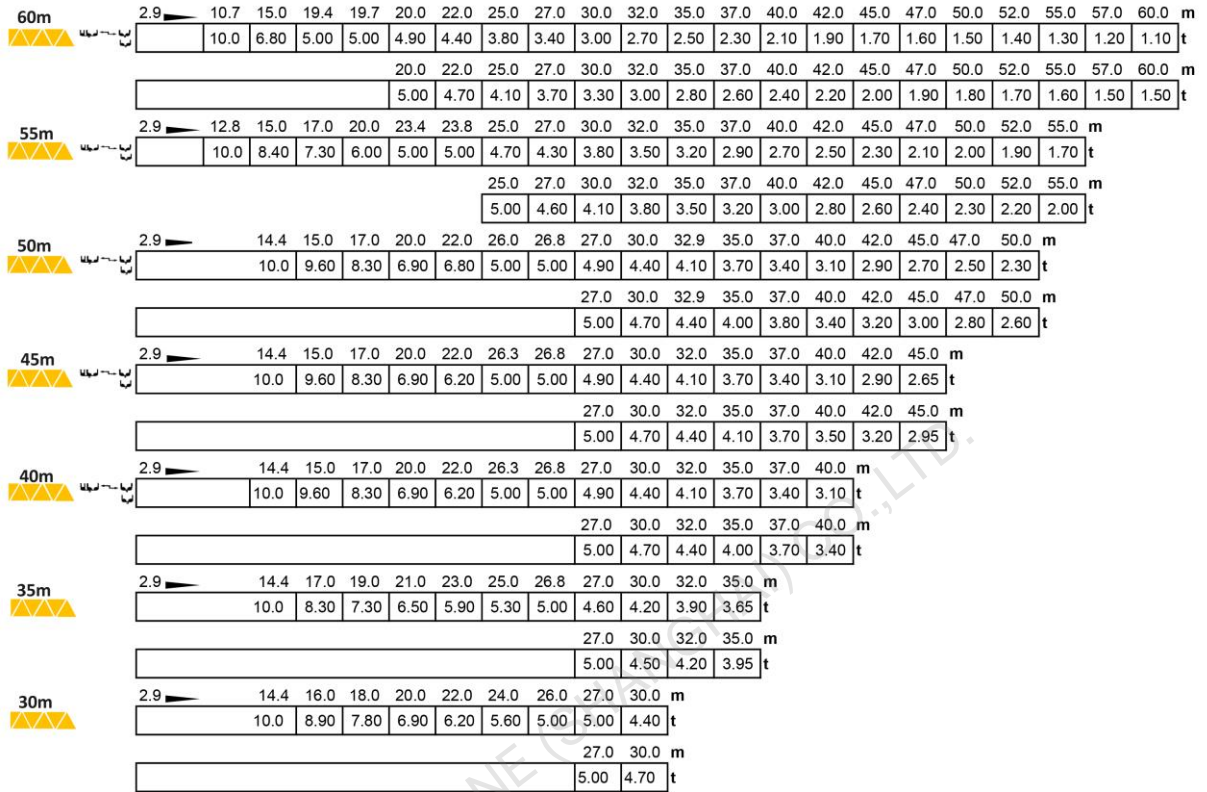
Mast-Reaction

Mast: 1.6m*1.6m

Mast: 2.0m*2.0m



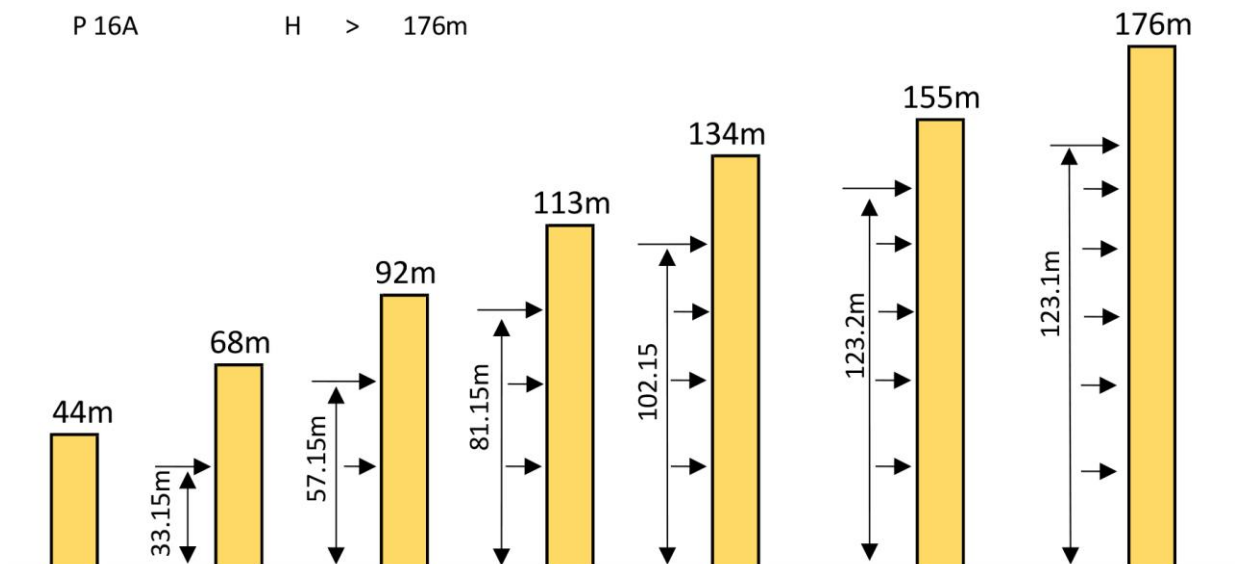
Loading Diagrams



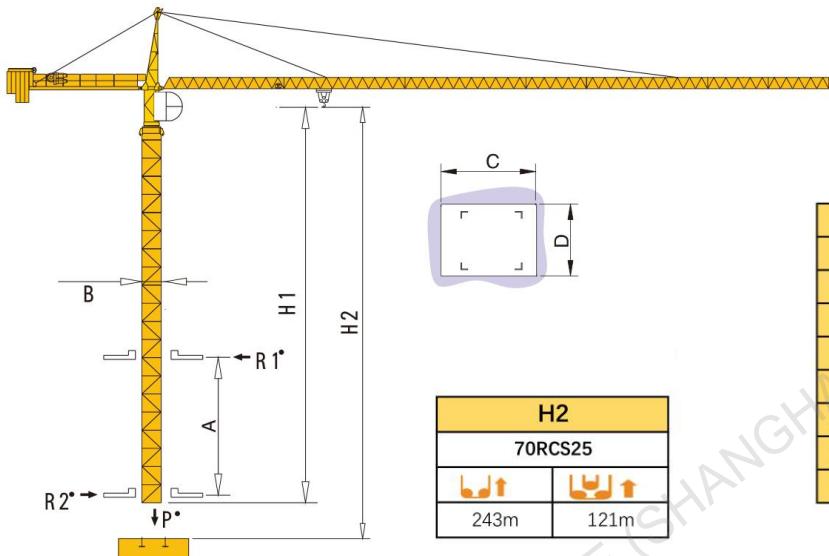
Anchorage

P 16A

H > 176m





Climbing Crane



	BA476	BA479	BA675
A	7m-11m	12m-19m	16m-21m
B	1.6m	1.6m	2m
C	2.15m	2.31m	2.58m
D	1.8m	1.77m	2.17m
H1	26.8m	43.3m	53.6m
R1			
R2			
P			

No parameter in working service

Mechanisms

Items	Mechanisms	Speed/Hoist weight				Rope Capacity	Motor(KW) 380V 50Hz/440V 60Hz
		M/min	t	M/min	t		
Hoisting	45LVF25					500m	45
		0-34	5	0-17	10		
		0-64	2.5	0-32	5		
	70RCS25	0-94	1.25	0-47	2.5	486m	51.5
		0-40	5	0-20	10		
		0-80	2.5	0-40	5		
Trolley	4TVF	0-55m/min					4
Slewing	95SVT	0-0.7rpm					95Nm*2
Traveling	4TRVF	12.5-25m/min					4*4
Necessary Electric Power		45LVF:75KVA/75LVF:105KVA					
Main electrical components: Schneider (Frequency converter, Contactor, Relay)							