

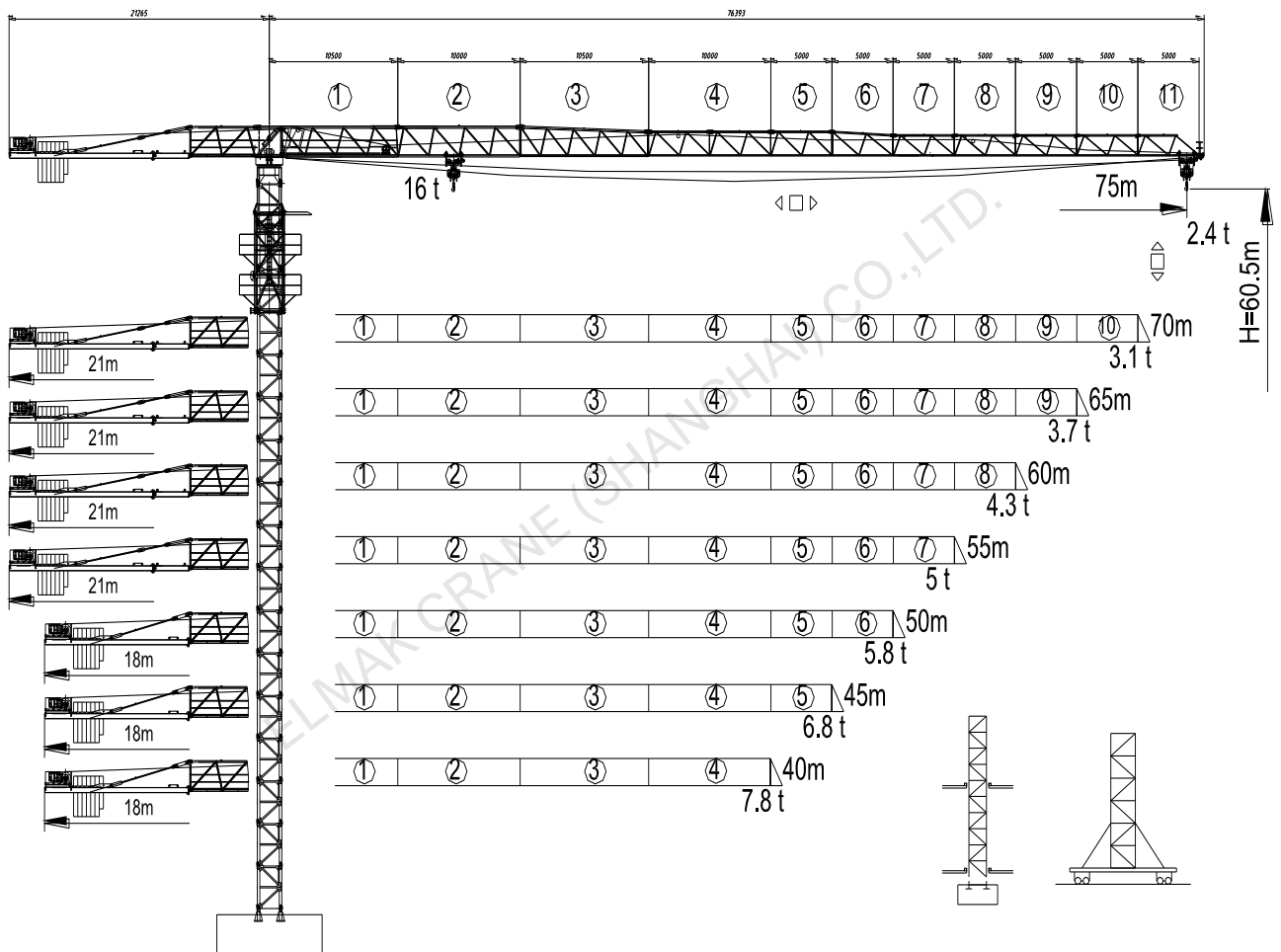
**ELMAK**<sup>®</sup>

ELMAK CRANE (SHANGHAI) CO.,LTD.



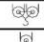
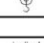
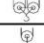
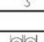
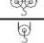
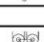


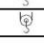





# **TOPLESS TOWER CRANE**

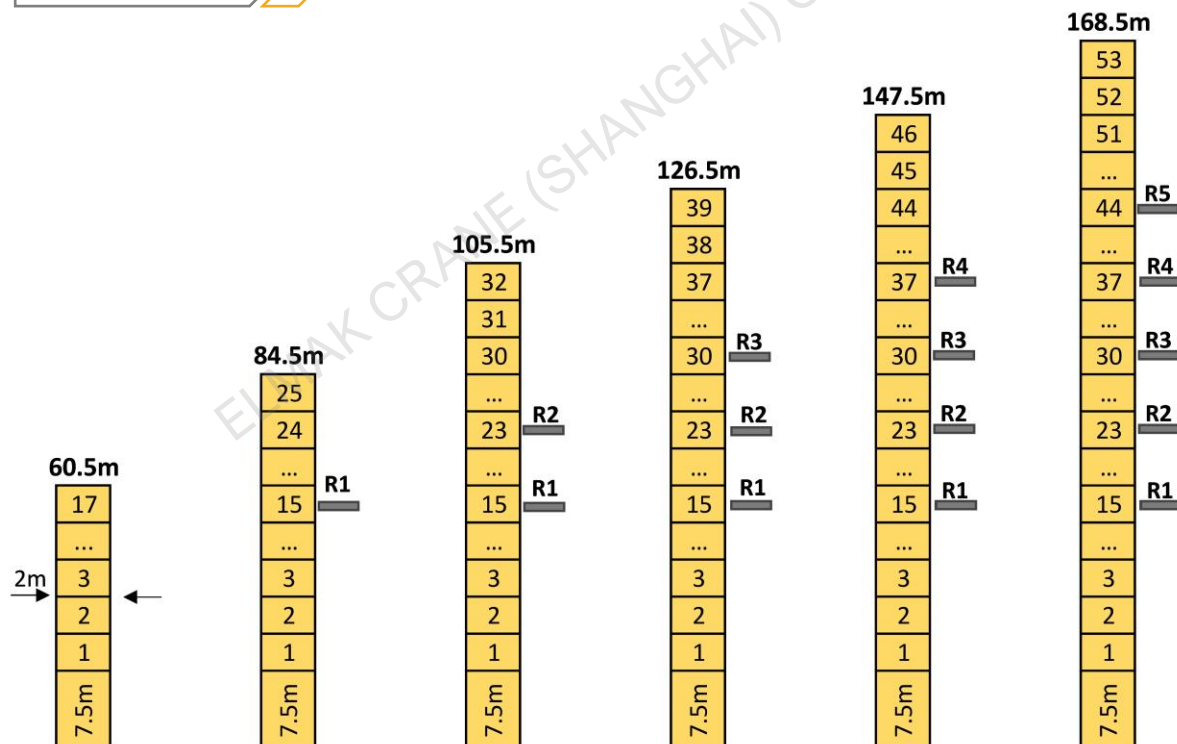
[www.elmaktowercrane.com](http://www.elmaktowercrane.com)

**EMT7524-16**

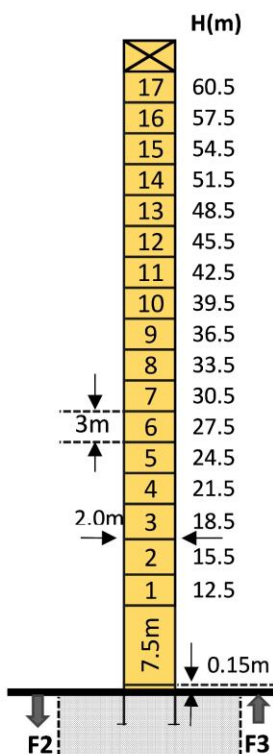


**Loading Diagrams**

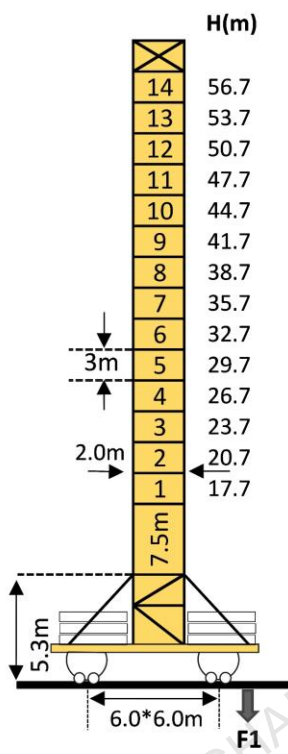
	Fail	R(Cmax)	C(max)	10.0	15.0	20.0	25.0	30.0	35.0	40.0	45.0	50.0	55.0	60.0	65.0	70.0	75.0
		m	t														
<b>75m</b>		14.90	16.00	16.00	15.92	11.44	8.82	7.10	5.89	4.99	4.30	3.75	3.29	2.92	2.6	2.33	2.1
		27.90	8.00	8.00	8.00	8.00	8.00	7.36	6.16	5.27	4.58	4.03	3.58	3.21	2.90	2.63	2.40
<b>70m</b>		16.50	16.00	16.00	16.00	12.87	9.97	8.08	6.74	5.74	4.97	4.36	3.86	3.45	3.10	2.80	
		31.30	8.00	8.00	8.00	8.00	8.00	8.00	7.06	6.06	5.28	4.67	4.17	3.75	3.40	3.10	
<b>65m</b>		17.70	16.00	16.00	16.00	13.98	10.88	8.84	7.40	6.34	5.51	4.85	4.32	3.88	3.50		
		33.30	8.00	8.00	8.00	8.00	8.00	8.00	7.58	6.52	5.70	5.05	4.51	4.07	3.70		
<b>60m</b>		18.50	16.00	16.00	16.00	14.88	11.43	9.30	7.79	6.68	5.81	5.13	4.57	4.10			
		34.90	8.00	8.00	8.00	8.00	8.00	8.00	7.97	6.86	6.00	5.32	4.76	4.30			
<b>55m</b>		19.30	16.00	16.00	16.00	15.35	11.96	9.74	8.17	7.00	6.10	5.38	4.80				
		36.40	8.00	8.00	8.00	8.00	8.00	8.00	8.00	7.19	6.29	5.58	5.00				
<b>50m</b>		19.90	16.00	16.00	6.00	15.90	12.40	10.10	8.48	7.27	6.34	5.60					
		37.60	8.00	8.00	8.00	8.00	8.00	8.00	8.00	7.47	6.54	5.80					
<b>45m</b>		20.60	16.00	16.00	16.00	16.00	12.87	10.49	8.81	7.56	6.60						
		38.90	8.00	8.00	8.00	8.00	8.00	8.00	8.00	7.76	6.80						
<b>40m</b>		20.60	16.00	16.00	16.00	16.00	12.93	10.54	8.85	7.60							
		39.10	8.00	8.00	8.00	8.00	8.00	8.00	8.00	7.80							

**Anchorage**


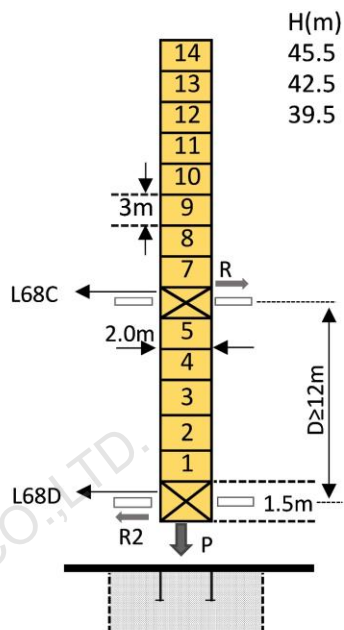
## Mast-Reaction



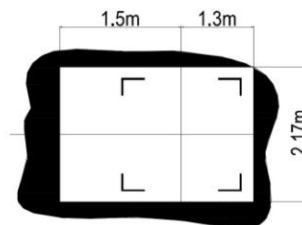
	●	■
F2	167.0t	259.0t
F3	109.0t	201.0t
👤	76.0t	



	●	■
F1	91.0t	115.0t
👤	72.0t	



Amin	Rmax	Pmax
12.0m	25.0t	100.0t
👤	68.7t	



👤 Total weight of free standing height(exclude counter weight ballast)  
 ● In service    ■ Out of service    F Reactions

## Mechanisms

Items	Mechanisms	Speed/Hoist weight				Rope Capacity	Motor(KW)
		M/min	t	M/min	t		
Hoisting	100LVF40B	🌀		🌀		670m	75
		0-40	8.00	0-20	16.00		
		0-80	4.00	0-40	8.00		
Trolley	X185K	0-60m/min				185N.m	
Slewing	RCV145	0-0.7rpm				12000N.m	
Traveling	5.5TRVF	0-30m/min				4*5.5	
Main electrical components: Schneider (Frequency converter, Contactor,Relay)							