

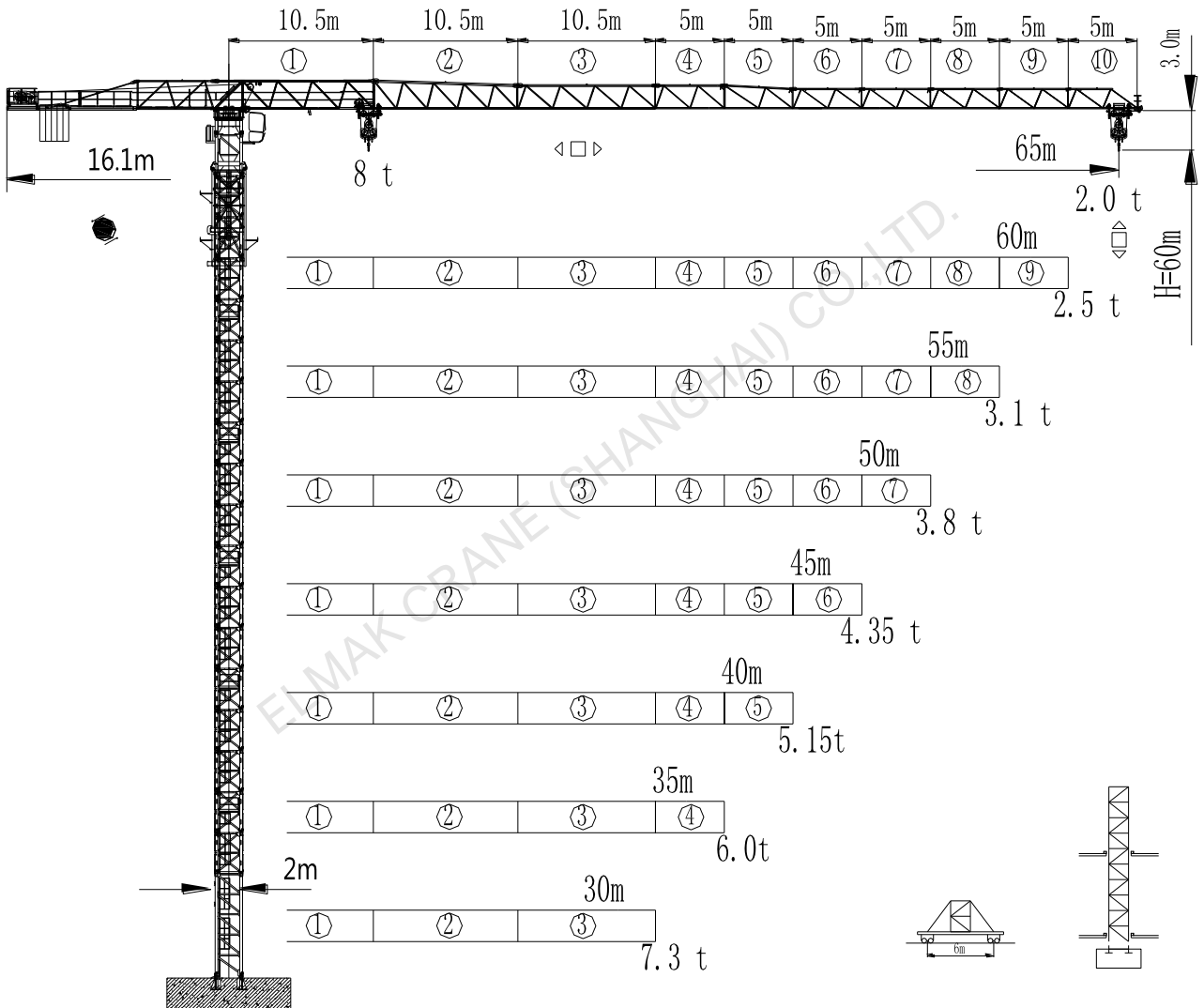
ELMAK[®]

ELMAK CRANE (SHANGHAI) CO.,LTD.

TOPLESS TOWER CRANE

www.elmaktowercrane.com

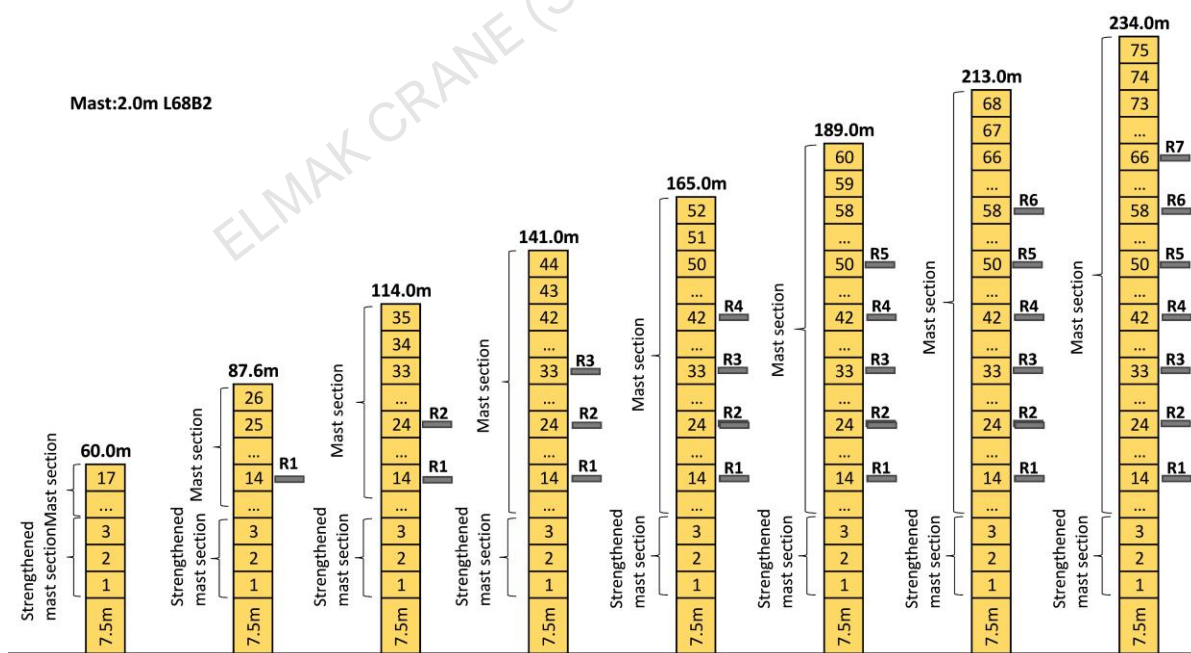
EMT6520-8



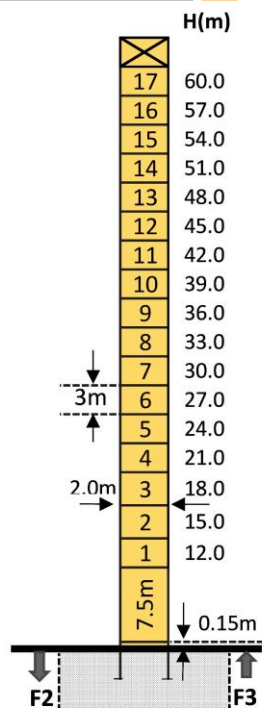
Loading Diagrams

	Fail	Max.load		10.0	15.0	20.0	25.0	30.0	35.0	40.0	45.0	50.0	55.0	60.0	65.0
		R(Cmax)	C(max)												
65m		22.4	8.00	8.00	8.00	8.00	7.03	5.63	4.63	3.87	3.29	2.82	2.44	2.12	1.85
		40.1	4.00	4.00	4.00	4.00	4.00	4.00	4.00	4.00	4.00	3.44	2.97	2.59	2.27
60m		23.8	8.00	8.00	8.00	8.00	7.58	6.09	5.02	4.22	3.60	3.10	2.69	2.35	
		42.8	4.00	4.00	4.00	4.00	4.00	4.00	4.00	4.00	4.00	3.75	3.25	2.84	2.50
55m		25.4	8.00	8.00	8.00	8.00	8.00	5.57	5.43	4.58	3.92	3.39	2.95		
		45.5	4.00	4.00	4.00	4.00	4.00	4.00	4.00	4.00	4.00	4.00	3.53	3.10	
50m		26.8	8.00	8.00	8.00	8.00	8.00	7.01	5.81	4.91	4.21	3.65			
		48.0	4.00	4.00	4.00	4.00	4.00	4.00	4.00	4.00	4.00	4.00	3.80		
45m		27.5	8.00	8.00	8.00	8.00	8.00	7.22	5.99	5.07	4.35				
		45.0	4.00	4.00	4.00	4.00	4.00	4.00	4.00	4.00	4.00	4.00			
40m		27.8	8.00	8.00	8.00	8.00	8.00	7.33	6.09	5.15					
		40.0	4.00	4.00	4.00	4.00	4.00	4.00	4.00	4.00	4.00				
35m		27.5	8.00	8.00	8.00	8.00	8.00	7.23	6.00						
		35.0	4.00	4.00	4.00	4.00	4.00	4.00	4.00	4.00					
30m		27.7	8.00	8.00	8.00	8.00	8.00	7.30							
		30.0	4.00	4.00	4.00	4.00	4.00	4.00	4.00						

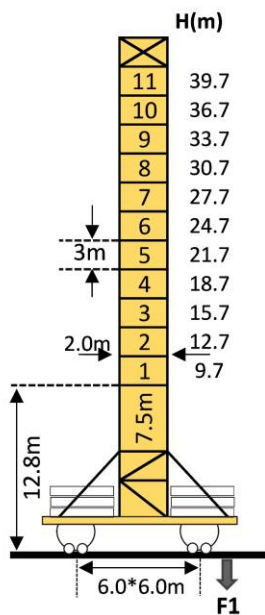
Anchorage



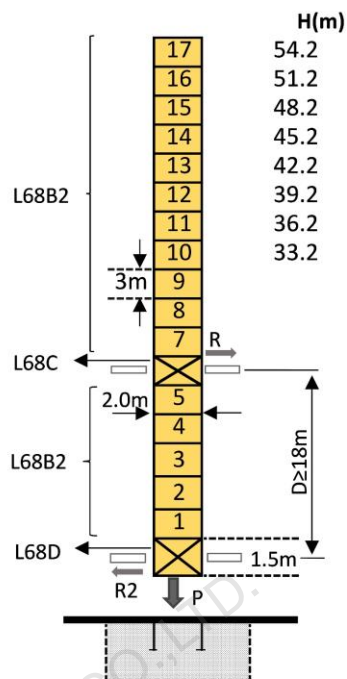
Mast-Reaction



	●	■
F2	134.4t	162.9t
F3	86.9t	75.6t
👤	57.0t	

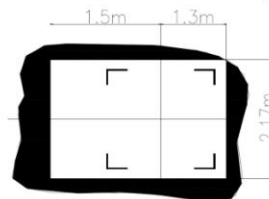


	●	■
F1	62.5t	56.4t
👤	68.0t	



Amin	Rmax	Pmax
18.0m	33.5t	114.0t
👤	69.0t	

- 👤 Total weight of free standing height(exclude counter weight ballast)
- In service ■ Out of service F Reactions



Mechanisms

Items	Mechanisms	Speed/Hoist weight				Rope Capacity	Motor(KW)
		M/min	t	M/min	t		
Hoisting	40QPHS-CG5	🌀		🌀		500m	30
		0-40	5.00	0-20	8.00		
		0-80	2.00	0-40	5.00		
Trolley	95JXL	0-58m/min				95N.m	
Slewing	RCV95	0-0.7rpm				2*95N.m	
Traveling	RT443	15-30m/min				2*5.2	
Main electrical components: Schneider (Frequency converter, Contactor,Relay)							