

Spare parts for tower cranes.  
General catalogue.

## About ELMAK

---

ELMAK Crane & Equipment provides the full series of high-quality construction machinery and overall solutions for construction sites. ELMAK is devoted to find the best solutions for our customers, improve production efficiency and reliability, save construction cost, introduce and apply the latest technologies in our products.

We have become a reliable partner in the field of design, cost estimation, manufacturing, sales, rental, maintenance, montage and after-sale services of the tower cranes for construction companies in more than 20 countries.

ELMAK Tower Cranes has a large stock of spare parts, which guarantees a fast delivery to our customers and partners worldwide.

We manufacture spare parts on our own or buy them only from verified trustworthy suppliers, which ensures tower cranes safety, long endurance and proper work of the crane.

We supply a wide range of joysticks, encoders, contactors, RCV blocks, mast sections, RCS panels, PC winches, static angle pathfinder, fixing angles, slewing motors and reducers, cabins and a lot more.

**We guarantee LIFE-TIME availability of spare parts for ELMAK cranes on stock.**

**RCS gears****Pulley****Weight limiter****Various bearings****Trolley rollers****Nuts****Nylon Pinion for limit switch****Bolts & pins****Pins****Limit switch****Thermistor temperature monitor****LCD Display**




**RCV Block X-14406-72**

**RCV Block V-61406-51**

**RCV Block B-61406-33**

**RCV Block M -61406 -43**

**OMD**

**HRCV**

**Joysticks**

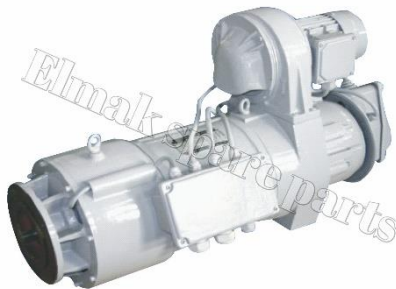
**Brush holder slipper ring**

**Electrical cabinet**

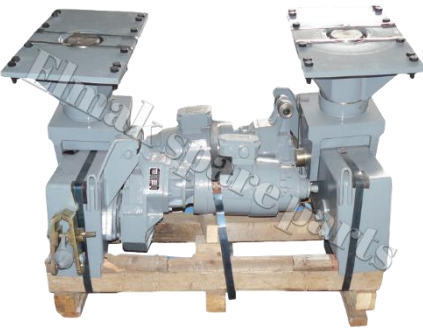
**Contactor**

**Electrical parts**

**Terminal strip**

**Brake parts****Brake assembly****Weather van block****Brake disc****Hydraulic brake****Fan****Coupling perf****Slewing motor****Trolley motor****Slewing reducer****Bevel reduction gear****70/55/45RCS, 33PC /25PC motor**



**Hoist winch****40PC/33PC Hoist winch****70 RCS Hoist winch****Travelling boggies****6DPC4 winch****Slewing ring****Resistance panel****Cabin****Hook****Fixing angle****Mast sections****Mast sections**