

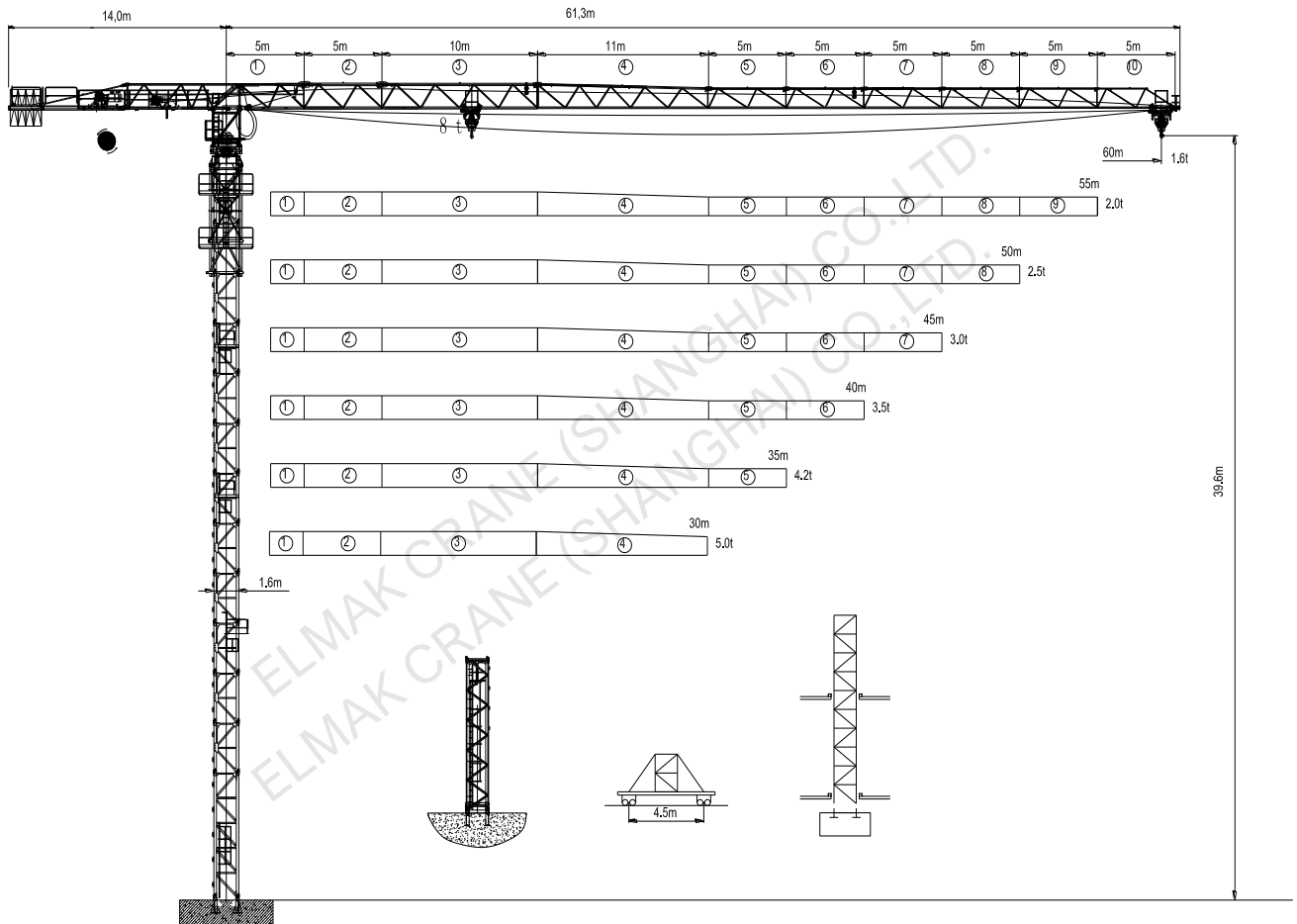
**ELMAK**<sup>®</sup>

ELMAK CRANE (SHANGHAI) CO.,LTD.

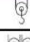
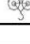




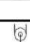
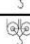
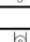
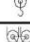

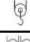


# **TOPLESS TOWER CRANE**

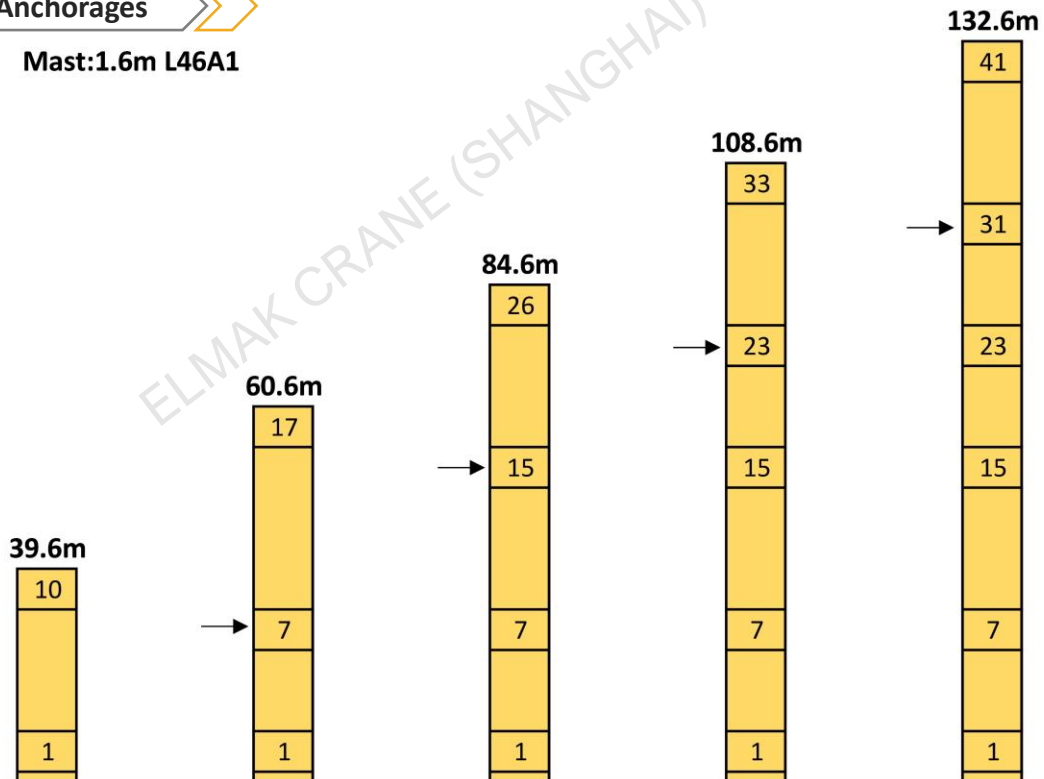
[www.elmaktowercrane.com](http://www.elmaktowercrane.com)

**EMT6016-8(1.6m)**

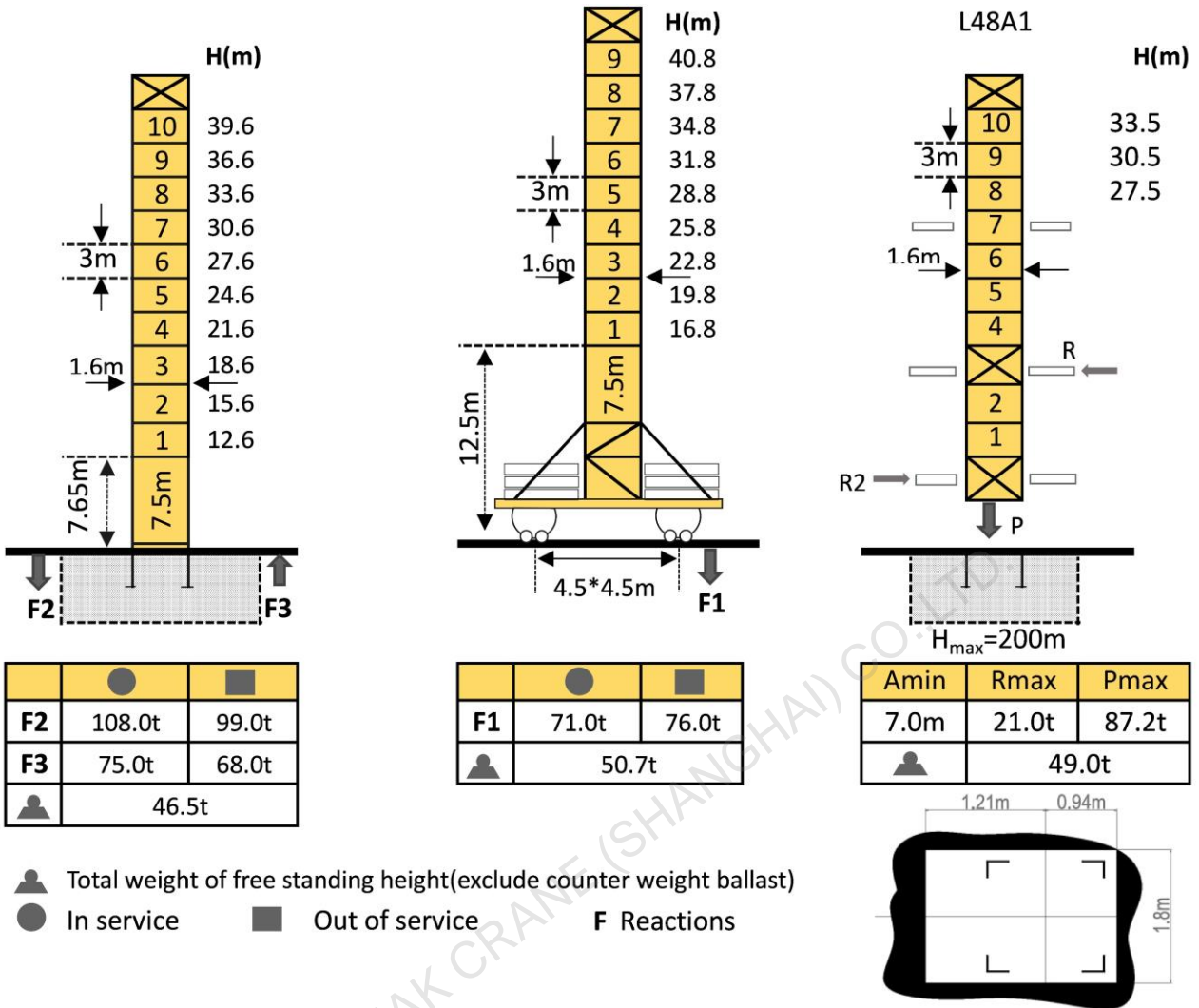


**Loading Diagrams**

	Fail	Max.load		10.0	15.0	18.0	20.0	23.0	25.0	30.0	35.0	40.0	45.0	50.0	55.0	60.0
		R(Cmax)	C(max)													
60m		4.00	30.40	4.00	4.00	4.00	4.00	4.00	4.00	4.00	3.36	2.83	2.42	2.09	1.82	1.60
		8.00	16.50	8.00	8.00	7.26	6.44	5.47	4.96	3.97	3.26	2.73	3.32	1.99	1.72	1.50
55m		4.00	32.4	4.00	4.00	4.00	4.00	4.00	4.00	4.00	3.64	3.08	2.64	2.29	2.00	
		8.00	17.6	8.00	8.00	7.80	6.92	5.89	5.34	4.29	3.54	2.98	2.54	2.19	1.90	
50m		4.00	34.6	4.00	4.00	4.00	4.00	4.00	4.00	4.75	3.94	3.34	2.87	2.50		
		8.00	18.8	8.00	8.00	8.00	7.45	6.35	5.77	4.65	3.84	3.24	2.77	2.40		
45m		4.00	35.7	4.00	4.00	4.00	4.00	4.00	4.00	4.00	4.00	3.48	3.00			
		8.00	19.4	8.00	8.00	8.00	7.74	6.60	6.00	4.83	4.01	3.38	2.90			
40m		4.00	35.9	4.00	4.00	4.00	4.00	4.00	4.00	4.00	4.00	3.50				
		8.00	19.5	8.00	8.00	8.00	7.77	6.63	6.02	4.86	4.02	3.40				
35m		4.00	37.2	4.00	4.00	4.00	4.00	4.00	4.00	4.00	4.00					
		8.00	20.2	8.00	8.00	8.00	8.00	6.90	6.27	5.06	4.20					
30m		4.00	36.8	4.00	4.00	4.00	4.00	4.00	4.00	4.00						
		8.00	20.0	8.00	8.00	8.00	7.98	6.82	6.19	5.00						

**Anchorage**
**Mast:1.6m L46A1**


## Mast-Reaction



Total weight of free standing height(exclude counter weight ballast)  
 In service     Out of service     **F** Reactions

## Mechanisms

Items	Mechanisms	Speed/Hoist weight				Rope Capacity	Motor(KW)
		M/min	t	M/min	t		
Hoisting	40QP20HS-CG5					500m	30
		0-40	4.0	0-20	8.0		
		0-80	2.0	0-40	4.0		
Trolley	95JXL	0-58m/min				95N.m	
Slewing	RCV95	0-0.7rpm				2*95N.m	
Traveling	RT443	15-30m/min				2*5.2	

Main electrical components: Schneider (Frequency converter, Contactor, Relay)