

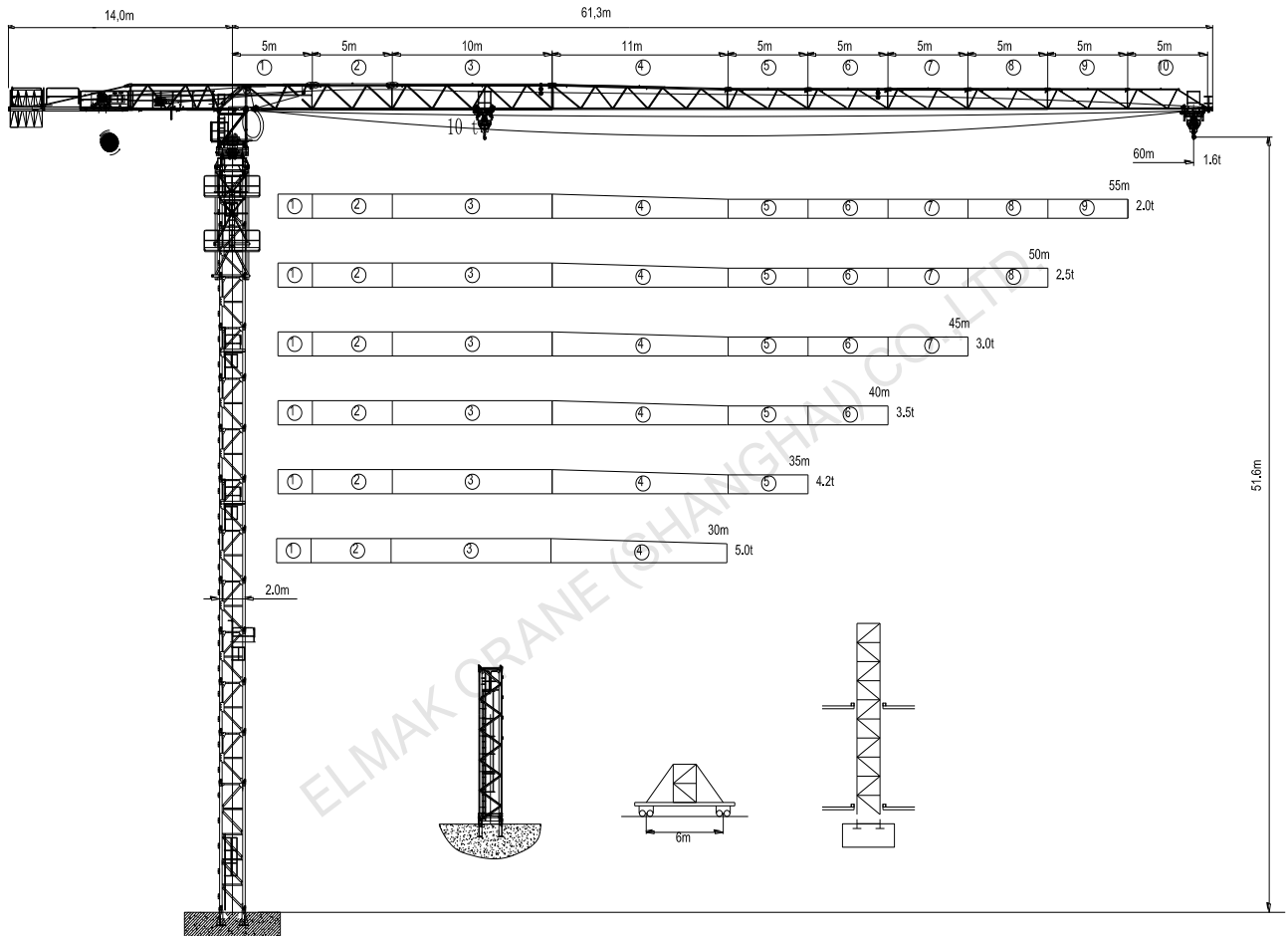
**ELMAK**<sup>®</sup>

ELMAK CRANE (SHANGHAI) CO.,LTD.


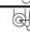







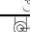


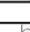
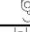
# TOPLESS TOWER CRANE

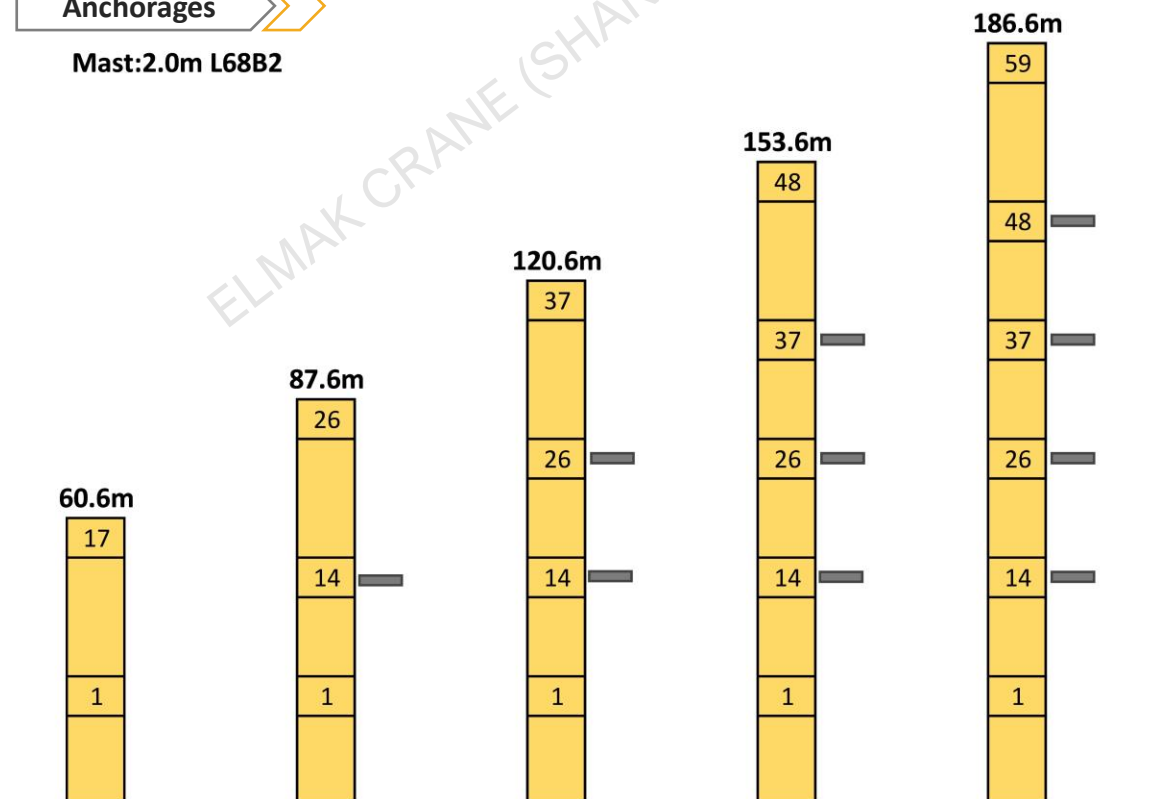
[www.elmaktowercrane.com](http://www.elmaktowercrane.com)

**EMT6016-10(2.0m)**

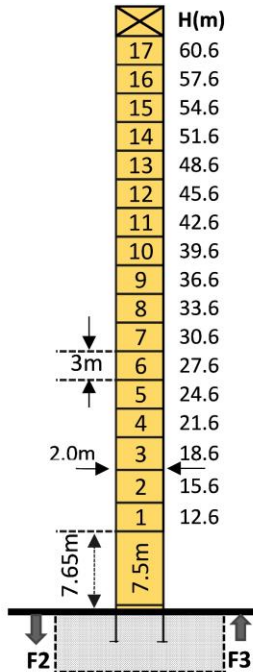


**Loading Diagrams**

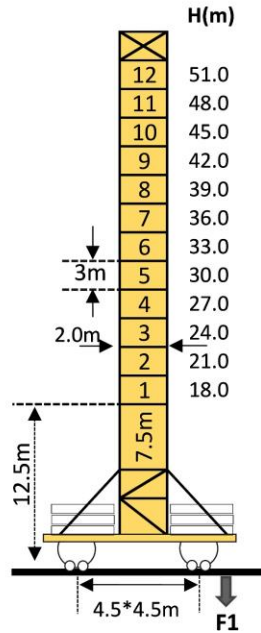
	Fail	Max.load		10.0	15.0	18.0	20.0	23.0	25.0	30.0	35.0	40.0	45.0	50.0	55.0	60.0
		R(Cmax)	C(max)													
60m		5.00	25.20	5.00	5.00	5.00	5.00	5.00	5.00	4.07	3.36	2.83	2.42	2.09	1.82	1.60
		10.0	13.50	10.0	8.91	7.26	6.44	5.47	4.96	3.97	3.26	2.73	2.32	1.99	1.72	1.50
55m		5.00	26.9	5.00	5.00	5.00	5.00	5.00	5.00	4.39	3.64	3.08	2.64	2.29	2.00	
		10.0	14.4	10.0	9.55	7.80	6.92	5.89	5.34	4.29	3.54	2.98	2.54	2.19	1.90	
50m		5.00	28.7	5.00	5.00	5.00	5.00	5.00	5.00	4.75	3.94	3.34	2.87	2.50		
		10.0	15.4	10.0	10.0	8.39	7.45	6.35	5.77	4.65	3.84	3.24	2.77	2.40		
45m		5.00	29.7	5.00	5.00	5.00	5.00	5.00	5.00	4.93	4.11	3.48	3.00			
		10.0	15.9	10.0	10.0	8.70	7.74	6.60	6.00	4.83	4.01	3.38	2.90			
40m		5.00	29.8	5.00	5.00	5.00	5.00	5.00	5.00	4.96	4.12	3.50				
		10.0	15.9	10.0	10.0	8.74	7.77	6.63	6.02	4.86	4.02	3.40				
35m		5.00	30.8	5.00	5.00	5.00	5.00	5.00	5.00	5.00	4.30					
		10.0	16.5	10.0	10.0	9.08	8.08	6.90	6.27	5.06	4.20					
30m		5.00	30.5	5.00	5.00	5.00	5.00	5.00	5.00	5.00						
		10.0	16.3	10.0	10.0	8.98	7.98	6.82	6.19	5.00						

**Anchorage**
**Mast:2.0m L68B2**


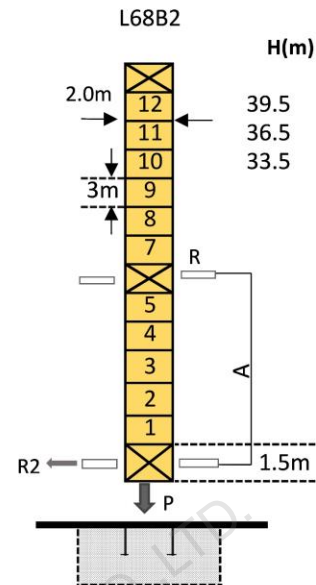
## Mast-Reaction



	●	■
F2	118.0t	158.0t
F3	77.0t	119.0t
Person	61.6t	

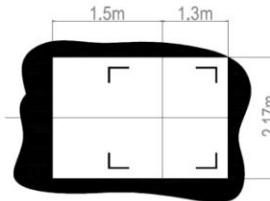


	●	■
F1	79.8t	102.0t
Person	70.1t	



Amin	Rmax	Pmax
16.0m	21.0t	87.2t
Person	68.5t	

Total weight of free standing height(exclude counter weight ballast)  
 In service    Out of service    **F** Reactions



## Mechanisms

Items	Mechanisms	Speed/Hoist weight				Rope Capacity	Motor(KW)
		M/min	t	M/min	t		
Hoisting	55RCS25	0-40	5.00	0-22	10.00	500m > 500m*	40
		0-80	2.50	0-44	5.00		
		0-36	5.00	0-21	10.00		
	45JLF25	0-72	2.50	0-42	5.00	45	
		0-108	1.25	0-54	2.50		
Trolley	95JXL	0-63m/min				5.5kw/120N.m	
Slewing	RCV95	0-0.7rpm				2*5.5kw/2*95N.m	
Traveling	RT443	12.5-25m/min				4*5.2	

Main electrical components: Schneider (Frequency converter, Contactor, Relay)