

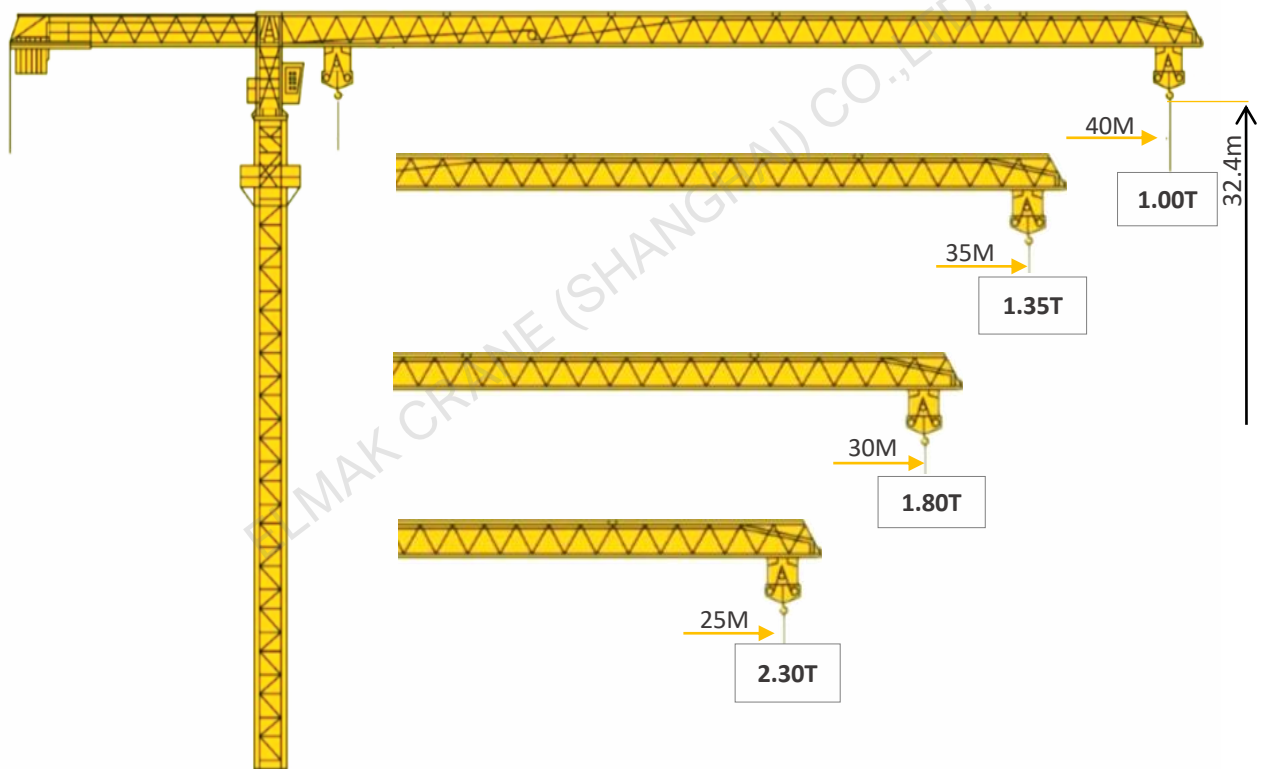
**ELMAK**<sup>®</sup>

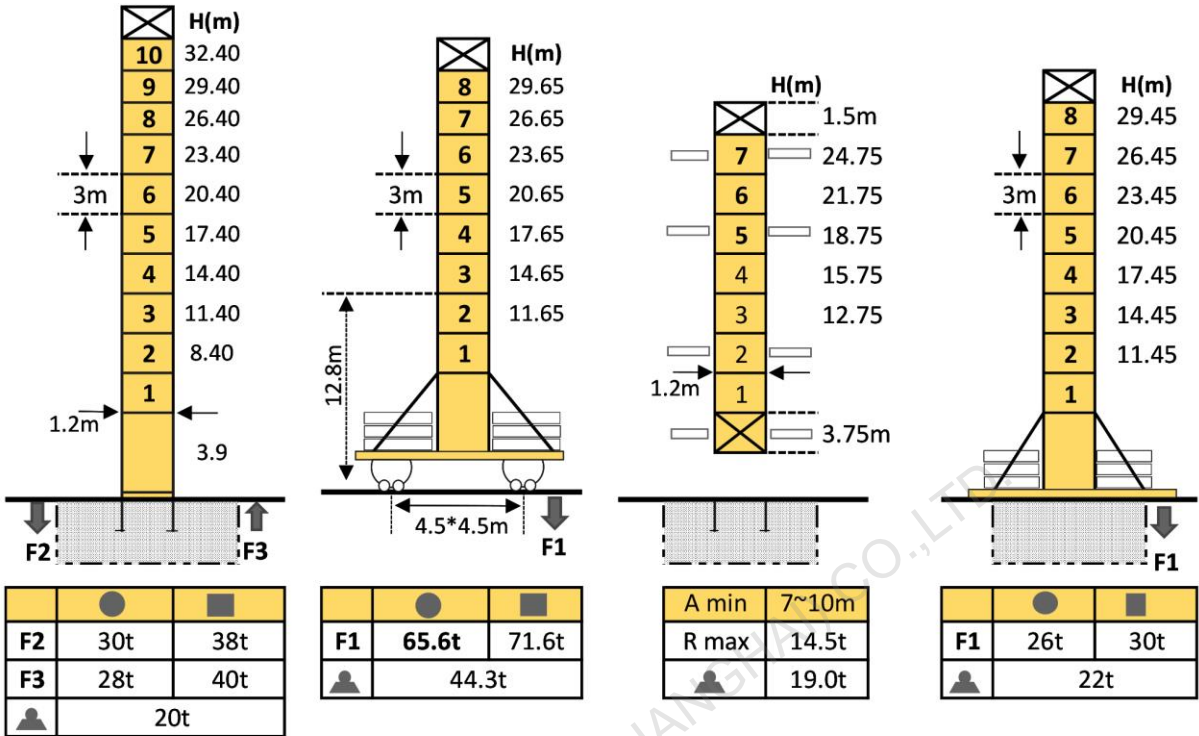
ELMAK CRANE (SHANGHAI) CO.,LTD.




# **TOPLESS TOWER CRANE**

[www.elmaktowercrane.com](http://www.elmaktowercrane.com)





**EMT4010-4**

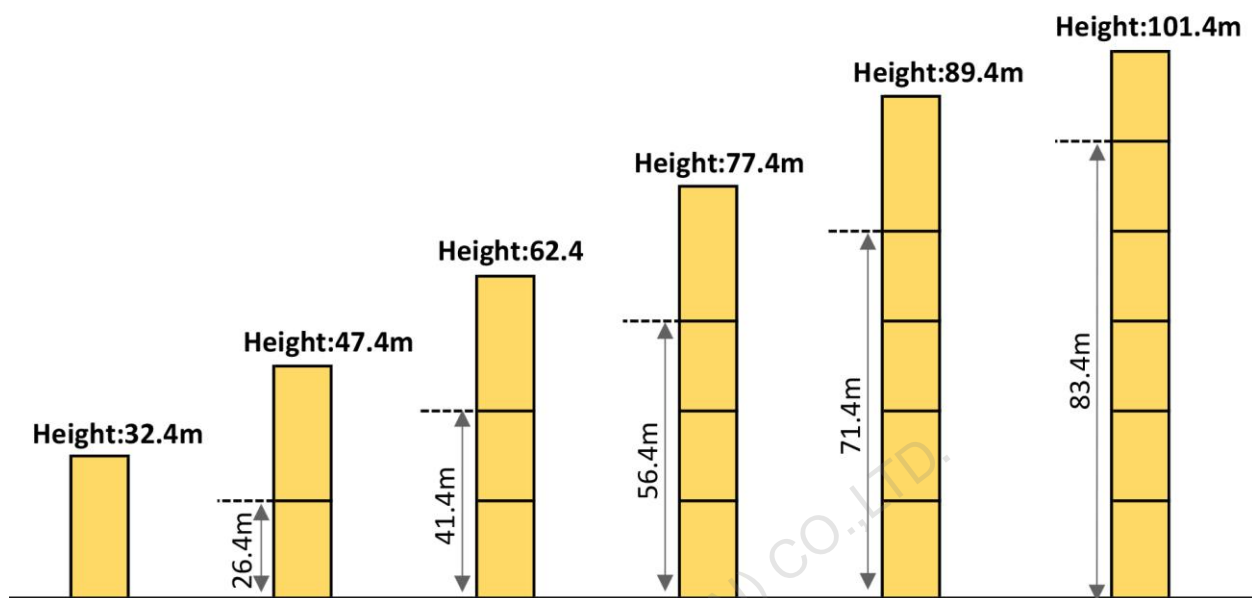




**Mast-Reaction**


 Total weight of free standing height(exclude counter weight ballast)  
 In service     Out of service    **F** Reactions

**Loading Diagrams**

40m	2.5~12.4	15.00	20.00	25.00	30.00	35.00	40.00	m
	4.00	3.26	2.35	1.81	1.45	1.19	1.00	t
35m	2.5~13.67	15.00	20.00	25.00	30.00	35.00	m	
	4.00	3.63	2.65	2.03	1.63	1.35	t	
30m	2.5~14.82	15.00	20.00	25.00	30.00	m		
	4.00	3.84	2.87	2.23	1.80	t		
25m	2.5~15.2	20.00	25.00	m				
	4.00	2.97	2.30	t				

**Anchorage**

**Mechanisms**

Items	Mechanisms	Speed/Hoist weight				Rope Capacity	Motor(KW) 400V 50Hz
		M/min	t	M/min	t		
Hoisting	QTJ40					280m	15
		0~9.7	2	0~4.8	4		
		0~32.5	2	0~16	4		
		0~65	1	0~32.5	2		
Trolleying	24BDZ50	0~24/40r/min					2.4
Slewing	37HR100	0-0.6rpm					3.7
Traveling	RT 324	0~12.5/25m/min					2*5.2
Necessary Electric Power							30KVA
Main electrical components: Schneider (Frequency converter, Contactor, Relay)							