

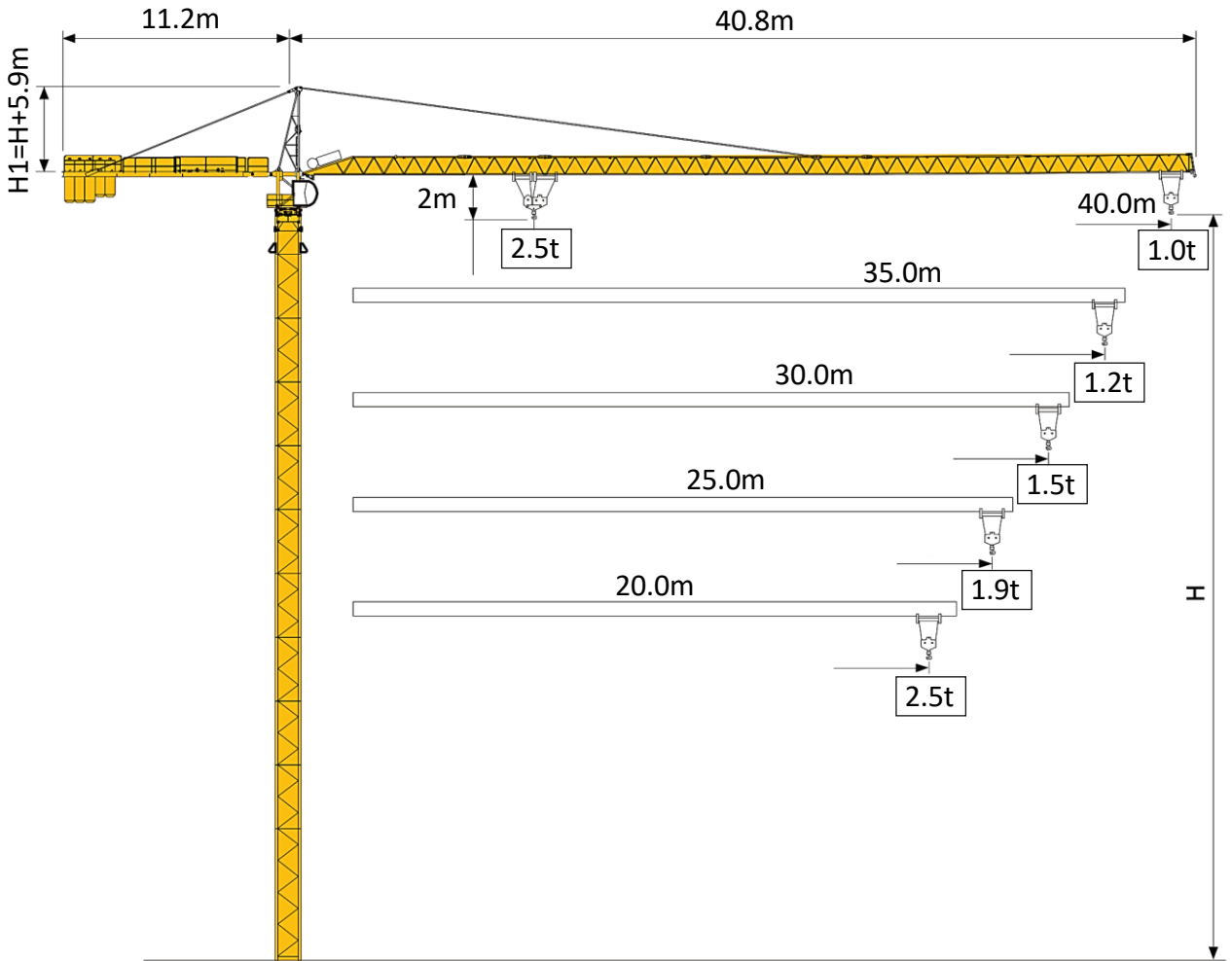
**ELMAK**<sup>®</sup>

ELMAK CRANE (SHANGHAI) CO.,LTD.



# TOPKIT TOWER CRANE

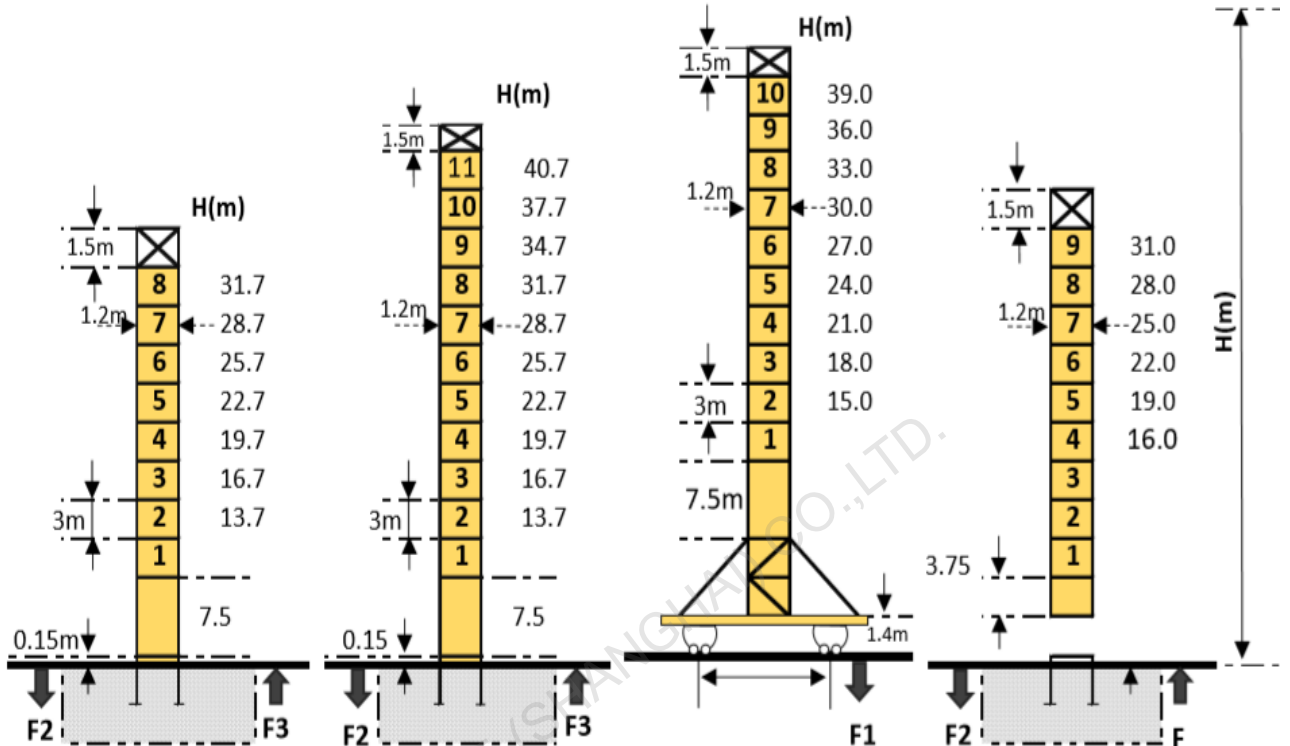
[www.elmaktowercrane.com](http://www.elmaktowercrane.com)

**EMK4010-3**



**Mast-Reaction**

Masts  3m  1.2m Jib 20m ⇨ 40m



P 12B	
F2	● 46.0t
	■ 65.0t
F3	● 34.0t
	■ 54.0t
	13.6t

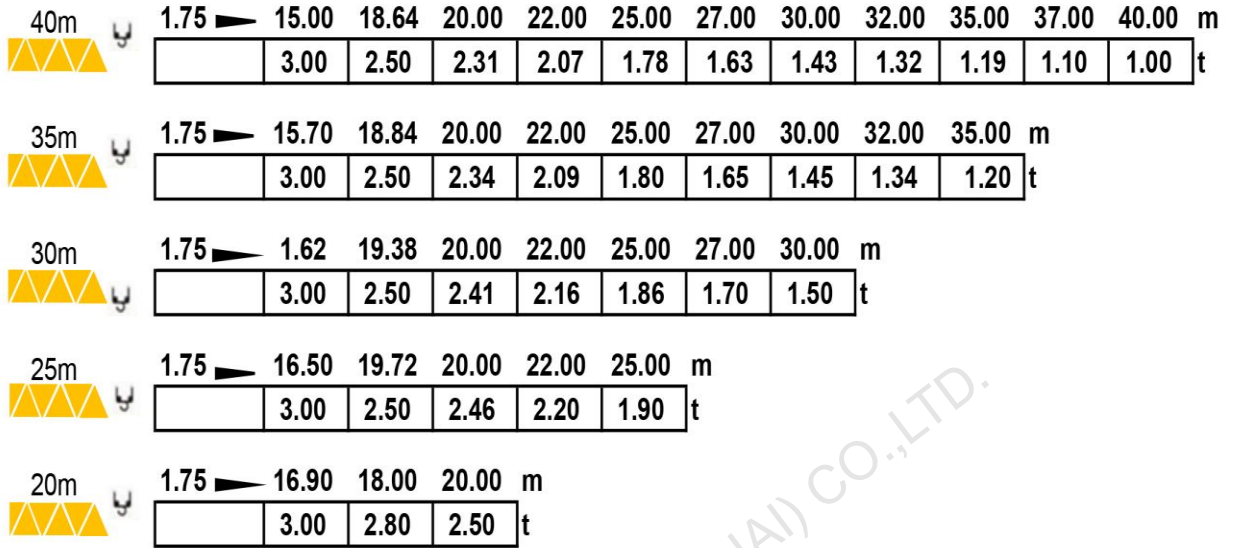
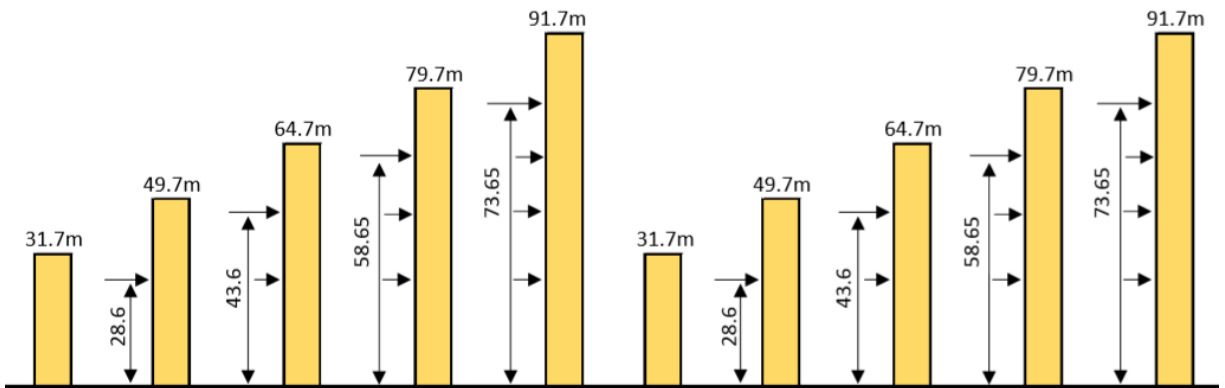
P 12B	
F2	● 55.0t
	■ 105.0t
F3	● 42.0t
	■ 93.0t
	15.5t

ZF12A	
F1	● 37.0t
	■ 55.0t
	20.5t

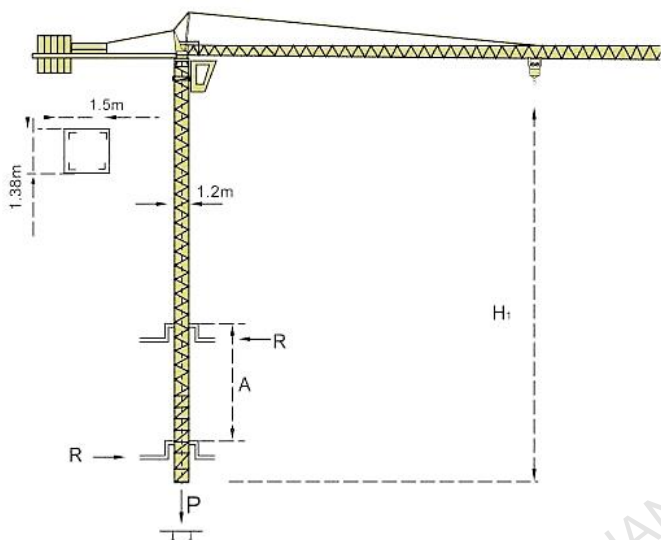
B125A	
F=Reactions	

Total weight of free standing height(exclude counter weight ballast)

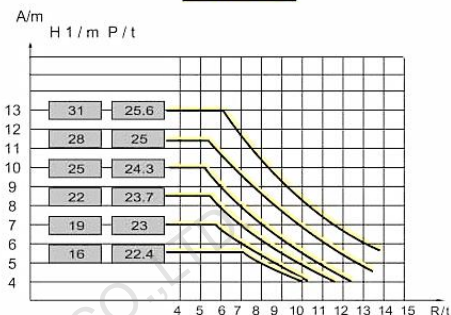
● In service      ■ Out of service      F Reactions

**Loading Diagrams**

**Anchorage**
**P12B**
**P12C**


## Climbing Crane



**B125 A**



- A Distance between collars
- H1 Crane height
- P Crane weight (in service)
- R Horizontal reaction

## Mechanisms

Items	Mechanisms	Speed/Hoist weight				Rope Capacity	Motor(KW) 400V 50Hz
		M/min	t	M/min	t		
Hoisting	QTJ40	↓ ↑		↓ ↑		280m	15
		0~9.7	2	0~4.8	4		
		0~32.5	2	0~16	4		
		0~65	1	0~32.5	2		
Trolleying	24BDZ50	0~24/40m/min					2.4
Slewing	37HR100	0-0.6rpm					3.7
Traveling	RT 324	0~12.5/25m/min					2*5.2
Necessary Electric Power							30KVA
Main electrical components: Schneider (Frequency converter, Contactor, Relay)							