

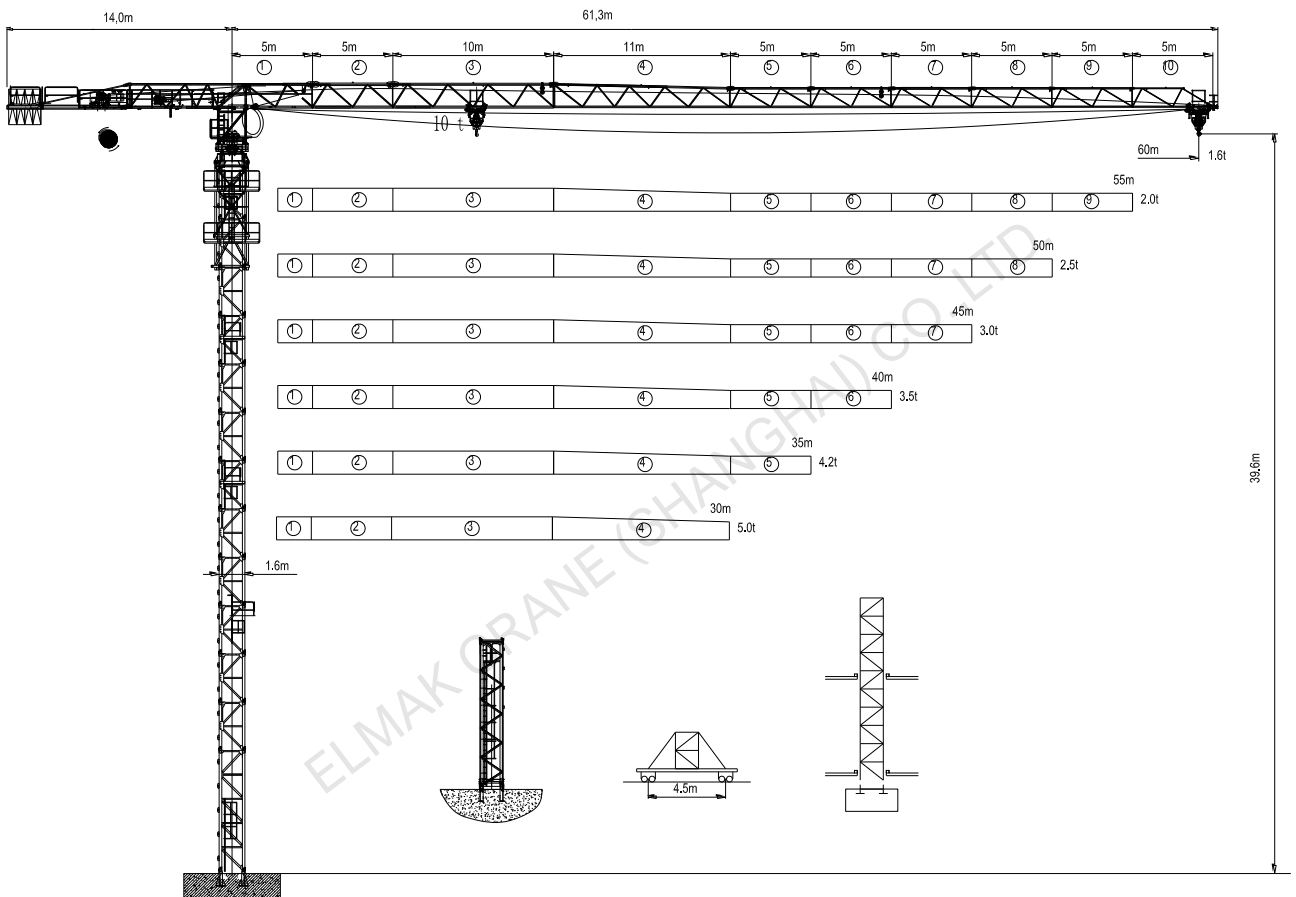
**ELMAK**<sup>®</sup>

ELMAK CRANE (SHANGHAI) CO.,LTD.

# **TOPLESS TOWER CRANE**

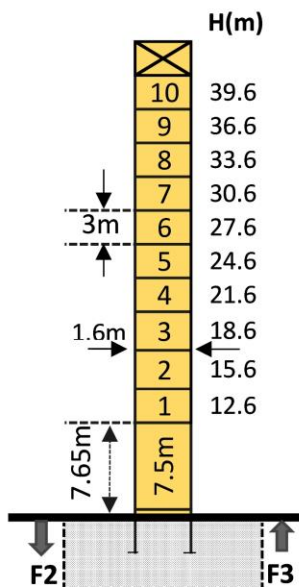
[www.elmaktowercrane.com](http://www.elmaktowercrane.com)

**EMT6016-10(1.6m)**

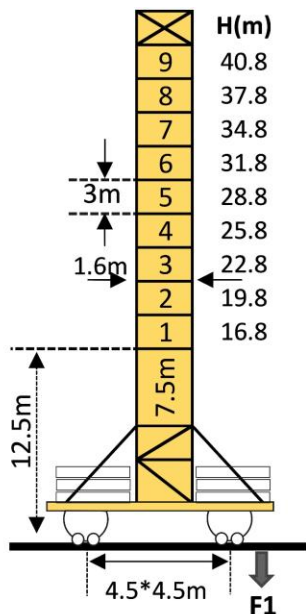




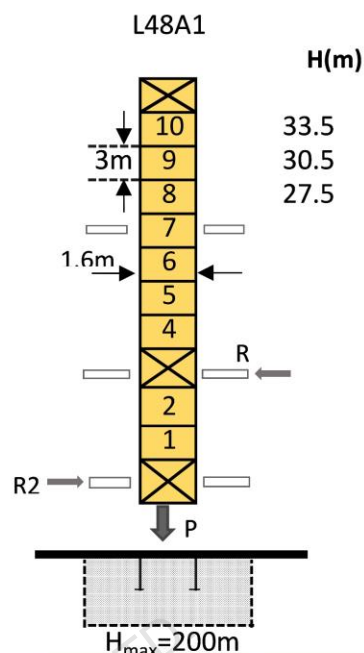
## Mast-Reaction



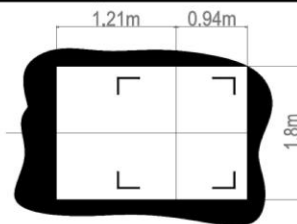
	●	■
<b>F2</b>	108.0t	99.0t
<b>F3</b>	75.0t	68.0t
👤	46.5t	



	●	■
<b>F1</b>	71.0t	76.0t
👤	50.7t	



	●	■
<b>Amin</b>	Rmax	Pmax
7.0m	21.0t	87.2t
👤	49.0t	



👤 Total weight of free standing height(exclude counter weight ballast)  
 ● In service    ■ Out of service    F Reactions

## Mechanisms

Items	Mechanisms	Speed/Hoist weight				Rope Capacity	Motor(KW)
		M/min	t	M/min	t		
Hoisting	55RCS25	👤		👤		500m > 500m*	40
		0-40	5.00	0-22	10.00		
		0-80	2.50	0-44	5.00		
	45JLF25	0-36	5.00	0-21	10.00	45	
		0-72	2.50	0-42	5.00		
0-108		1.25	0-54	2.50			
Trolley	120JXL	0-63m/min				5.5kw/120N.m	
Slewing	RCV95	0-0.7rpm				2*5.5kw/2*95N.m	
Traveling	RT443	12.5-25m/min				4*5.2	
Main electrical components: Schneider (Frequency converter, Contactor,Relay)							