

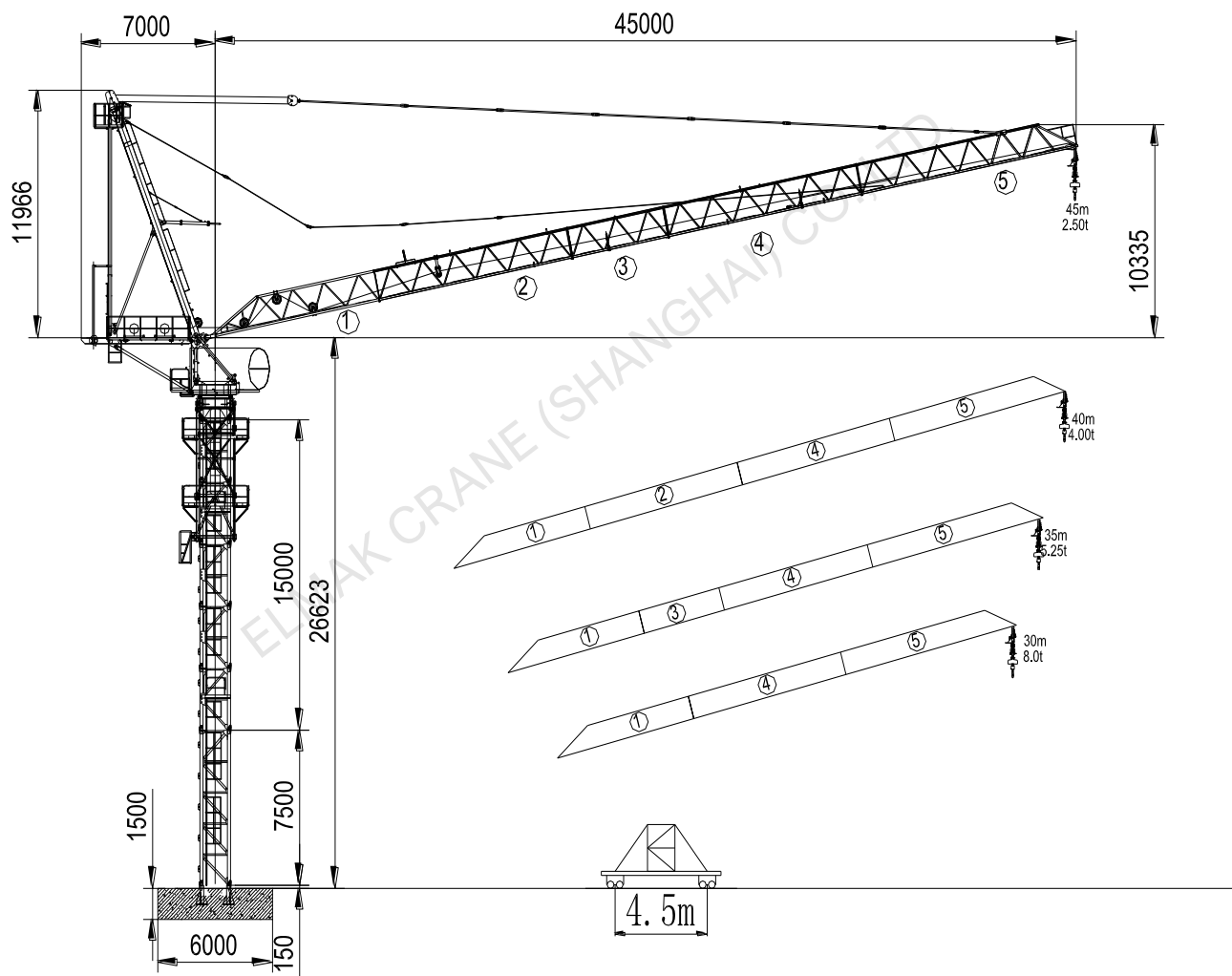
ELMAK[®]

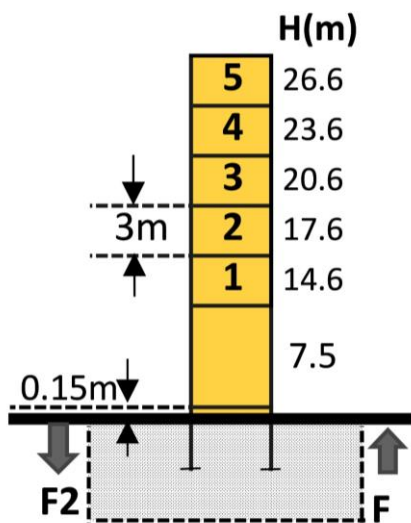
ELMAK CRANE (SHANGHAI) CO.,LTD.

LUFFING TOWER CRANE

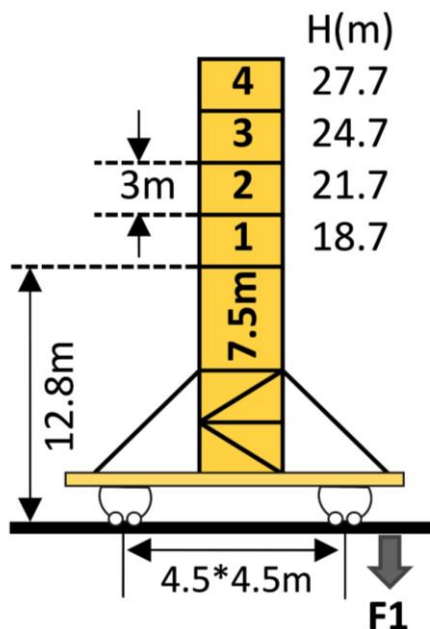
www.elmaktowercrane.com

EML4525-8

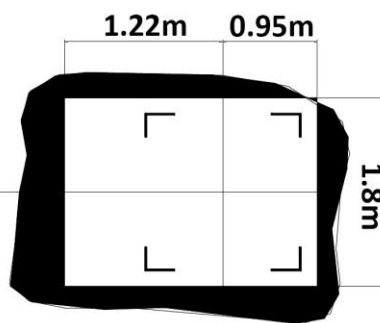
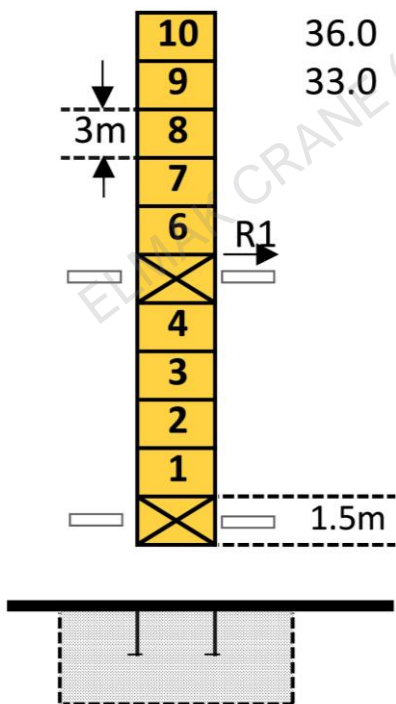


Mast-Reaction


	●	■
F2	134.4t	132.6t
F3	110.9t	107.4t
👤	36.6t	







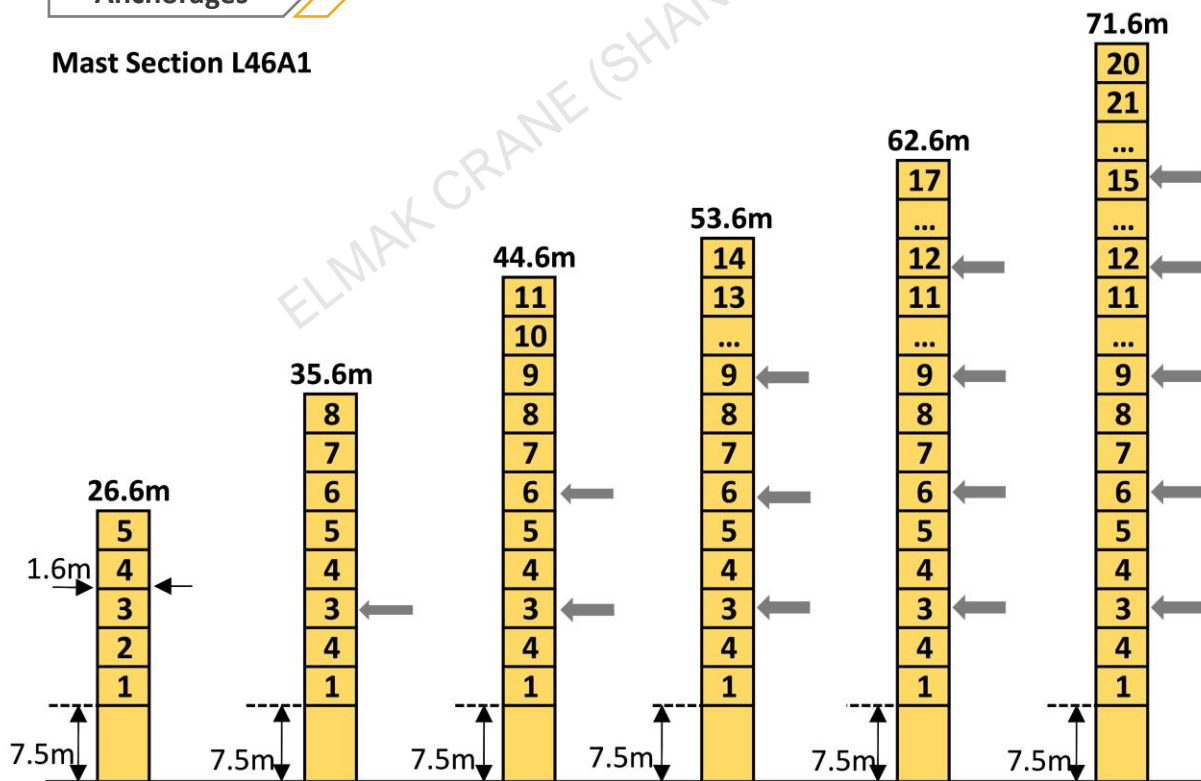
	●	■
F1	62.1t	68.1t
👤	40.8t	

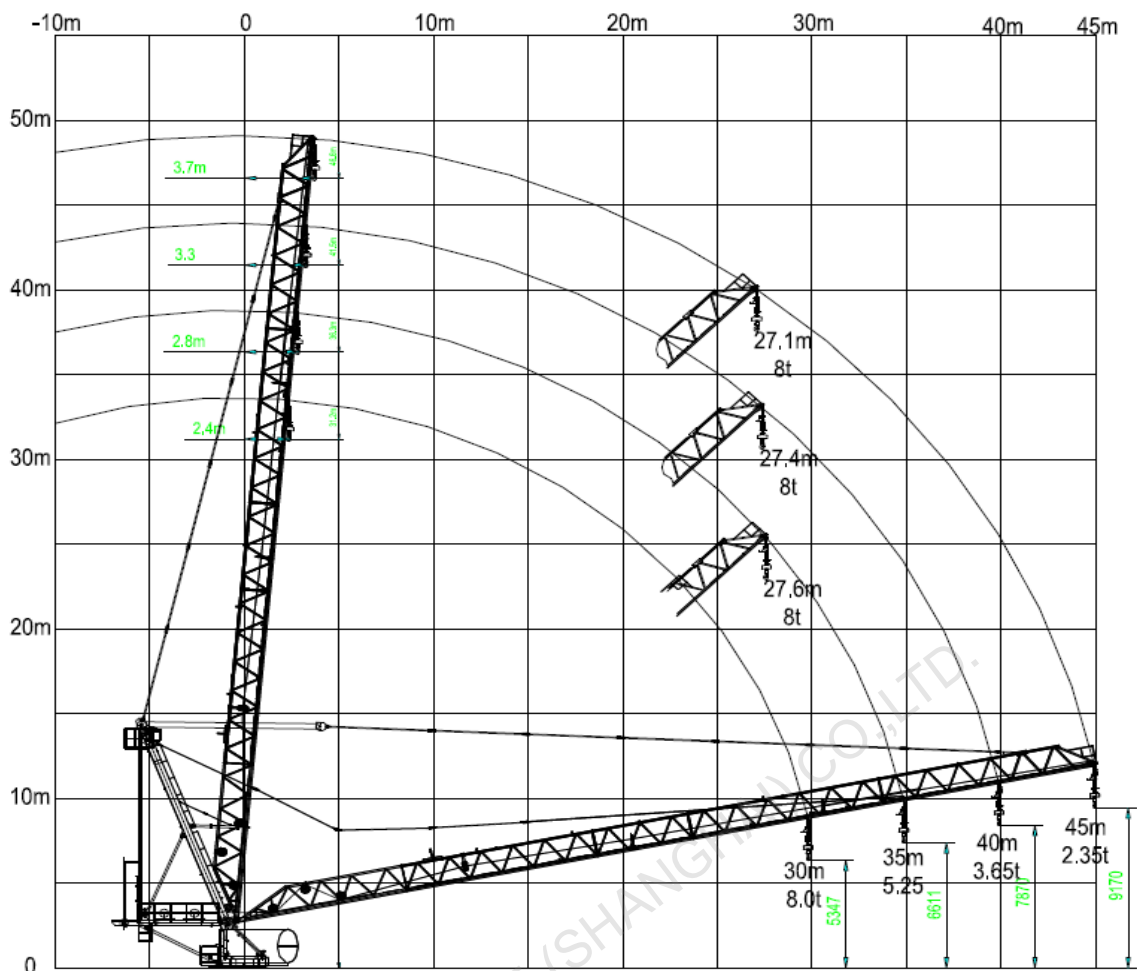


Amin	9.0m
Rmax	70.0t
Pmax	58.0t
👤	40.0t

Loading curves

45m	20.0	25.0	27.1	30.0	35.0	40.0	42.8	45.0	m
	4.00	4.00	4.00	4.00	4.00	3.70	3.10	2.50	t
	8.00	8.00	8.00	6.92	5.45	4.53	3.85	2.35	t
40m	20.0	25.0	27.4	30.0	35.0	38.0	40.0	m	
	4.00	4.00	4.00	4.00	4.00	4.00	4.00	t	
	8.00	8.00	8.00	7.04	5.59	4.90	3.65	t	
35m	20.0	25.0	27.6	30.0	32.0	35.0	m		
	4.00	4.00	4.00	4.00	4.00	4.00	t		
	8.00	8.00	8.00	7.80	6.51	5.25	t		
30m	20.0	25.0	27.5	28.0	30.0	m			
	4.00	4.00	4.00	4.00	4.00	t			
	8.00	8.00	8.00	8.00	8.00	t			

Anchorage
Mast Section L46A1


Luffing jib

Mechanisms

Items	Mechanisms	Speed/Hoist weight				Rope	Motor
		M/min	t	M/min	t	Capacity	KW
Hoisting	30LFV15B	↓ ↑		↓ ↑		500m	30
		0-40	3.0	0-20	6.0		
		0-80	1.5	0-40	3.0		
Luffing	24DVF25B1	0~42m/min					24
Slewing	JH08	0~0.7rpm					2*95N.M
Travelling	RT443	15~30m/min					2*5.2
Main electrical components: Schneider (Frequency converter, Contactor, Relay)							