

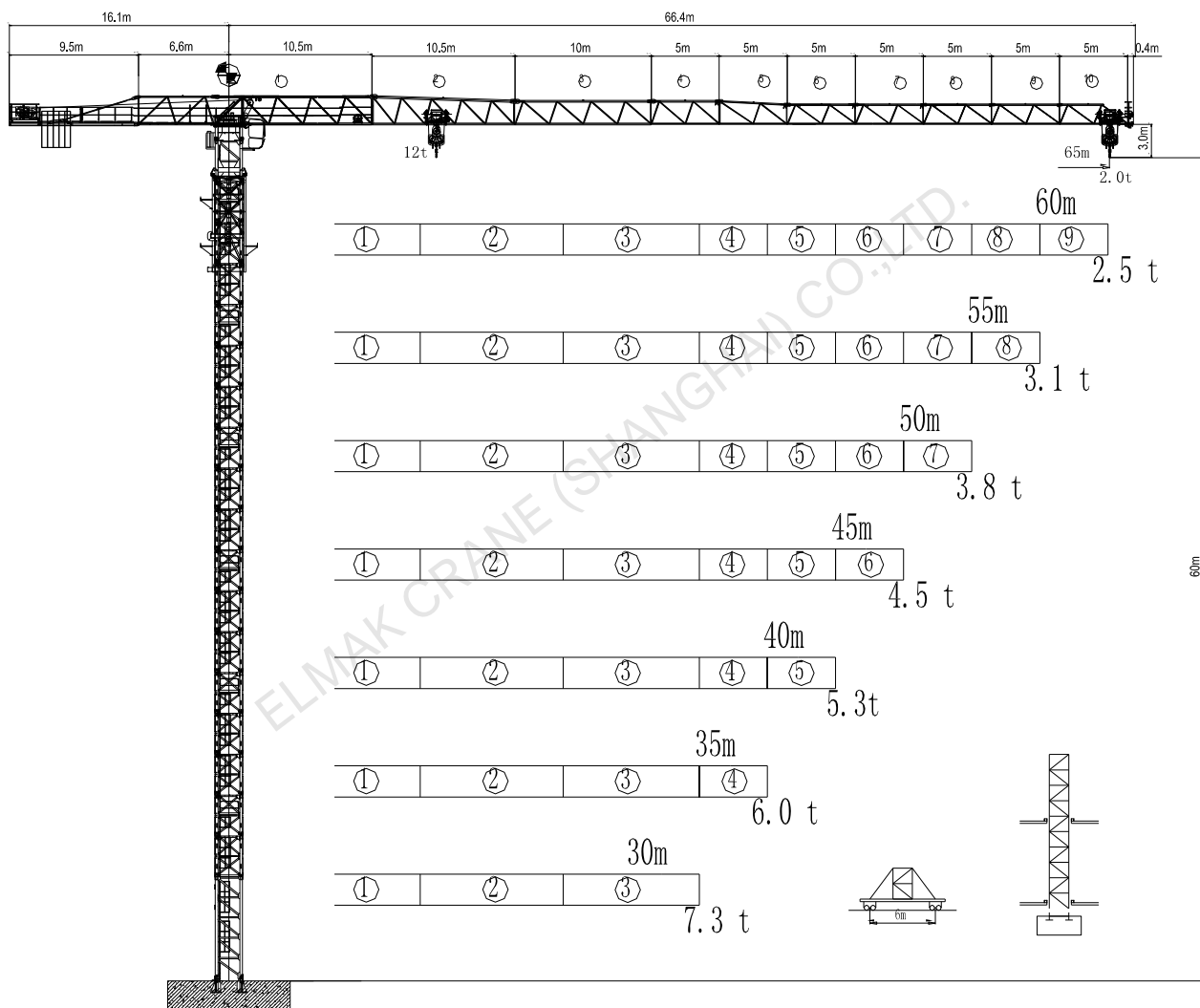
ELMAK[®]

ELMAK CRANE (SHANGHAI) CO.,LTD.





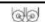




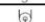

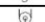

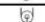


TOPLESS TOWER CRANE

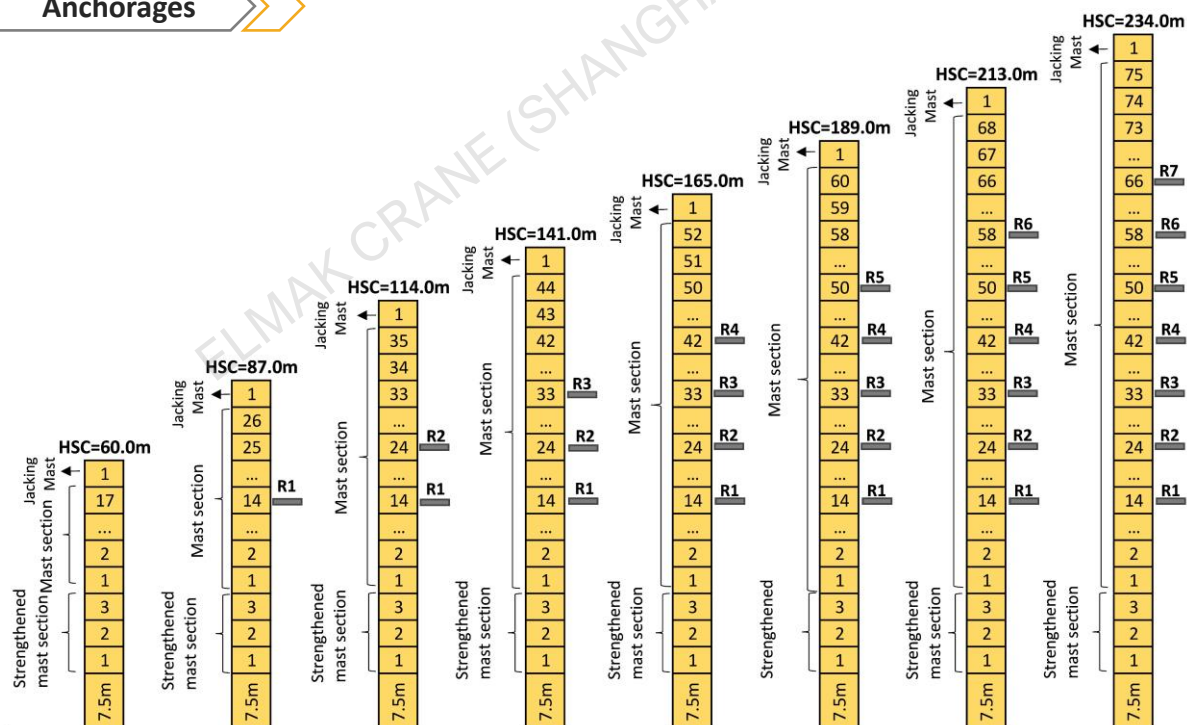
www.elmaktowercrane.com

EMT6520-12

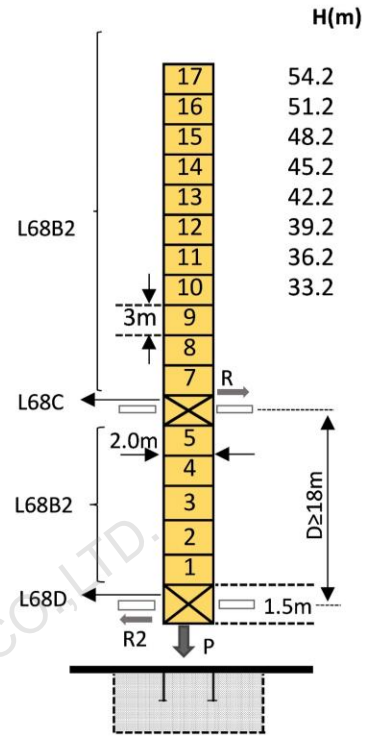
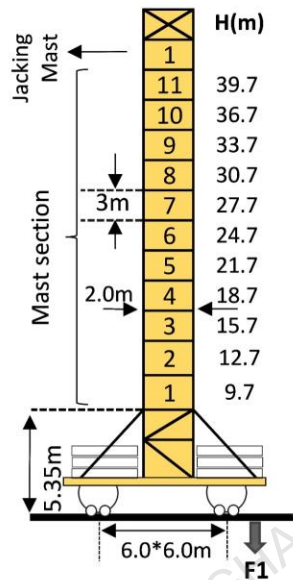
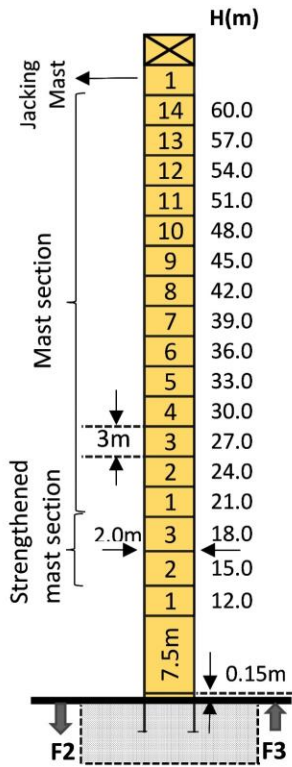


Loading Diagrams

	Fail	R(Cmax)	C(max)	10.0	15.0	20.0	25.0	30.0	35.0	40.0	45.0	50.0	55.0	60.0	65.0
		m	t												
65m		15.70	12.00	12.00	9.13	7.03	5.63	4.63	3.87	3.29	3.29	2.82	2.44	2.12	1.85
		29.00	6.00	6.00	6.00	6.00	6.00	5.77	4.77	4.02	3.44	2.97	2.59	2.27	2.00
		16.70	12.00	12.00	12.00	9.82	7.58	6.09	5.02	4.22	3.60	3.10	2.69	2.35	
		30.90	6.00	6.00	6.00	6.00	6.00	6.00	5.17	4.37	3.75	3.25	2.84	2.50	
55m		17.80	12.00	12.00	12.00	10.54	8.16	6.57	5.43	4.58	3.92	3.39	2.95		
		32.90	6.00	6.00	6.00	6.00	6.00	6.00	5.58	4.73	4.06	3.53	3.10		
50m		18.80	12.00	12.00	12.00	11.21	8.69	7.01	5.81	4.91	4.21	3.65			
		34.70	6.00	6.00	6.00	6.00	6.00	6.00	5.96	5.06	4.36	3.80			
45m		19.20	12.00	12.00	12.00	11.52	8.94	7.22	5.99	5.07	4.35				
		35.60	6.00	6.00	6.00	6.00	6.00	6.00	6.00	5.22	4.50				
40m		19.50	12.00	12.00	12.00	11.69	9.07	7.33	6.09	5.15					
		36.10	6.00	6.00	6.00	6.00	6.00	6.00	6.00	5.30					
35m		19.30	12.00	12.00	12.00	11.54	8.96	7.23	6.00						
		35.70	6.00	6.00	6.00	6.00	6.00	6.00	6.00						
30m		19.40	12.00	12.00	12.00	11.65	9.04	7.30							
		36.00	6.00	6.00	6.00	6.00	6.00	6.00							

Anchorage


Mast-Reaction

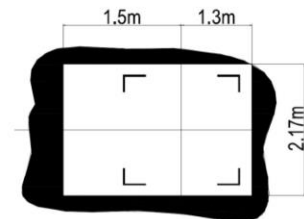


	●	■
F2	134.4t	162.9t
F3	86.9t	75.6t
Person	58.0t	

	●	■
F1	62.5t	56.4t
Person	53.0t	

Amin	Rmax	Pmax
18.0m	33.5t	114.3t
Person	62.9t	

- Person icon: Total weight of free standing height(exclude counter weight ballast)
- : In service
- : Out of service
- F Reactions



Mechanisms

Items	Mechanisms	Speed/Hoist weight				Rope Capacity	Motor(KW)
		M/min	t	M/min	t		
Hoisting	55JLF30	Ⓢ		Ⓢ		800m	55
		0-45	6.00	0-22.5	12.00		
		0-90	3.00	0-45	6.00		
Trolley	120JXL	0-63m/min					120N.m
Slewing	JH02B	0-0.7rpm					12000N.m
Traveling	RT544	15-27m/min					4*5.2

Main electrical components: Schneider (Frequency converter, Contactor, Relay)