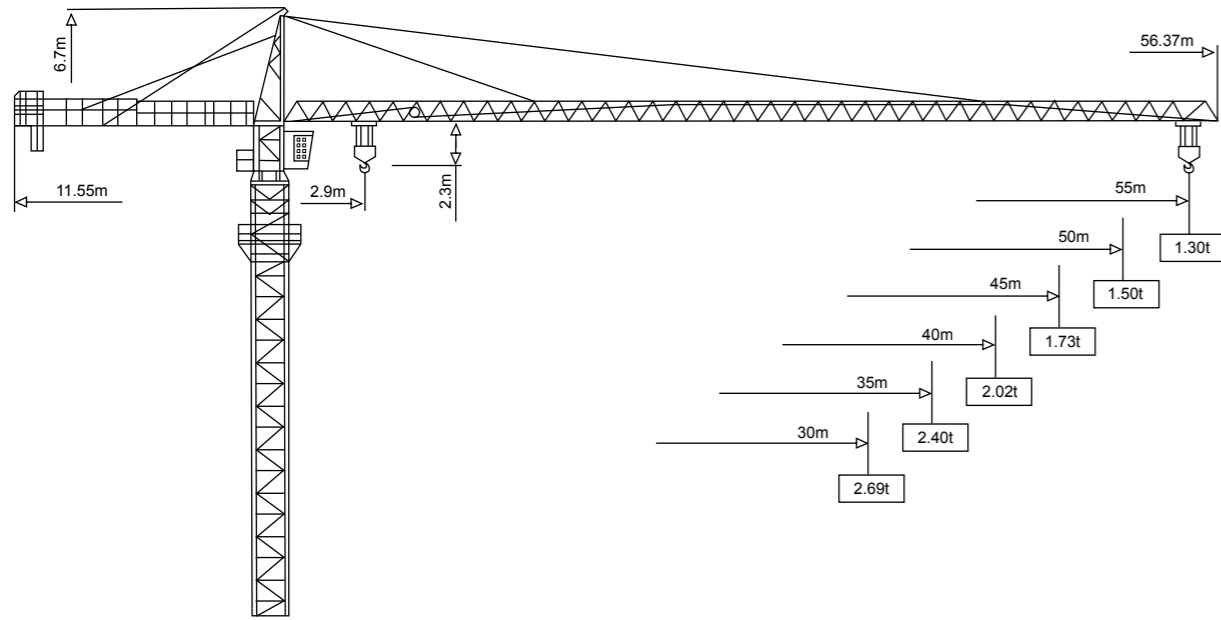


EMK 55/6

Outline Dimensions / Anahat Ölçüleri



Mechanism / Mekanizma							Drum Capacity / Tambur Sarım Kapasitesi			Motor
33PC15	m/min	9.6	40.0	90.0	4.35	20.0	40.0	450m	24KW	
		1	3.00	3.00	1.50	6.00	6.00			3.00
X96	m/min	15-38-58							95Nm	
RCV95	m/min	0-0.7							2X95Nm	
RT324	m/min	12.5/25							2X2.5KW	

Load Diagram / Yük Diyagramı

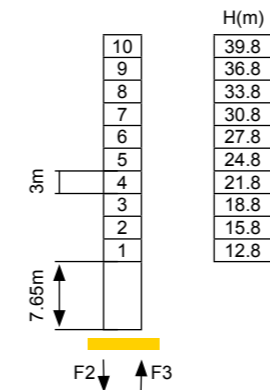
Jib m	Fall	R(Cmax) m	C(max) t	15	20	26	20.3	30	35	40	45	50	55
55	IV	16.15	6.00	6.00	4.65	3.37	3.00	2.59	2.30	1.92	1.63	1.40	1.20
	II	23.90	3.00	3.00	3.00	3.00	3.00	2.69	2.40	2.02	1.73	1.50	1.30
50	IV	16.15	6.00	6.00	4.65	3.37	3.00	2.59	2.30	1.92	1.63	1.40	
	II	29.30	3.00	3.00	3.00	3.00	3.00	2.69	2.40	2.02	1.73	1.50	
45	IV	16.15	6.00	6.00	4.65	3.37	3.00	2.59	2.30	1.92	1.63		
	II	23.90	3.00	3.00	3.00	3.00	3.00	2.69	2.40	2.02	1.73		
40	IV	16.15	6.00	6.00	4.65	3.37	3.00	2.59	2.30	1.92			
	II	29.30	3.00	3.00	3.00	3.00	3.00	2.69	2.40	2.02			
35	IV	16.15	6.00	6.00	4.65	3.37	3.00	2.59	2.30				
	II	23.90	3.00	3.00	3.00	3.00	3.00	2.69	2.40				
30	IV	16.15	6.00	6.00	4.65	3.37	3.00	2.59					
	II	29.30	3.00	3.00	3.00	3.00	3.00	2.69					

EMK 55/6

Mast: 1.6m x 1.6m

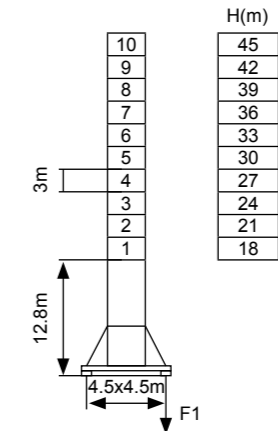
Reactions / Reaksiyonlar

Stationary / Sabit



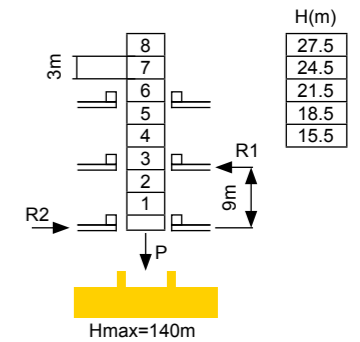
F2	● 82t	■ 100t
F3	● 55t	■ 75t
	■ 38.4t	

Travelling / Hareketli



F1	● 65t	■ 78t
	■ 45t	

Internal Climbing / Bina İçi Tırmanma



P	R1	R2
36.2t	18.8t	16.8t
	■ 38.8t	

- : In service / Çalışır Durumda
- : Out of Service / Servis Dışı
- : Without load and ballast with longest jib and maximal height / En uzun bomlu ve maksimum yükseklikte yüksüz ve dengeli

Anchorage / Bina Sabitleme

